

60 AutoCAD 2D & 3D Practice

# Drawings and Projects

INCLUDES 2D AND 3D DRAWINGS WITH DWG FILES



SOURCECAD

# Overview

The drawings here are intended to be used as a practice material and to help you apply CAD tools on some real-life drawings. There is no denying in the fact that practicing is the best way to learn any new skill and the more you practice more likely you are to retain that information. Hence, this eBook has been developed keeping in mind the needs of learners who are in the initial or intermediate phase of learning the CAD software.

This eBook will also work as a great practice material for instructors to assign projects to their students.

Although, the drawings of this eBook are made with AutoCAD software still it is not solely a practice drawing material for AutoCAD users. You can use the drawings in this eBook to practice with other Parametric or non-parametric software's. This current edition of eBook contains 30, 2D practice drawings and 20, 3D practice drawings. We keep adding more videos in this eBook, visit [SourceCAD course page](#) for the latest edition of the book.

# Companion videos and

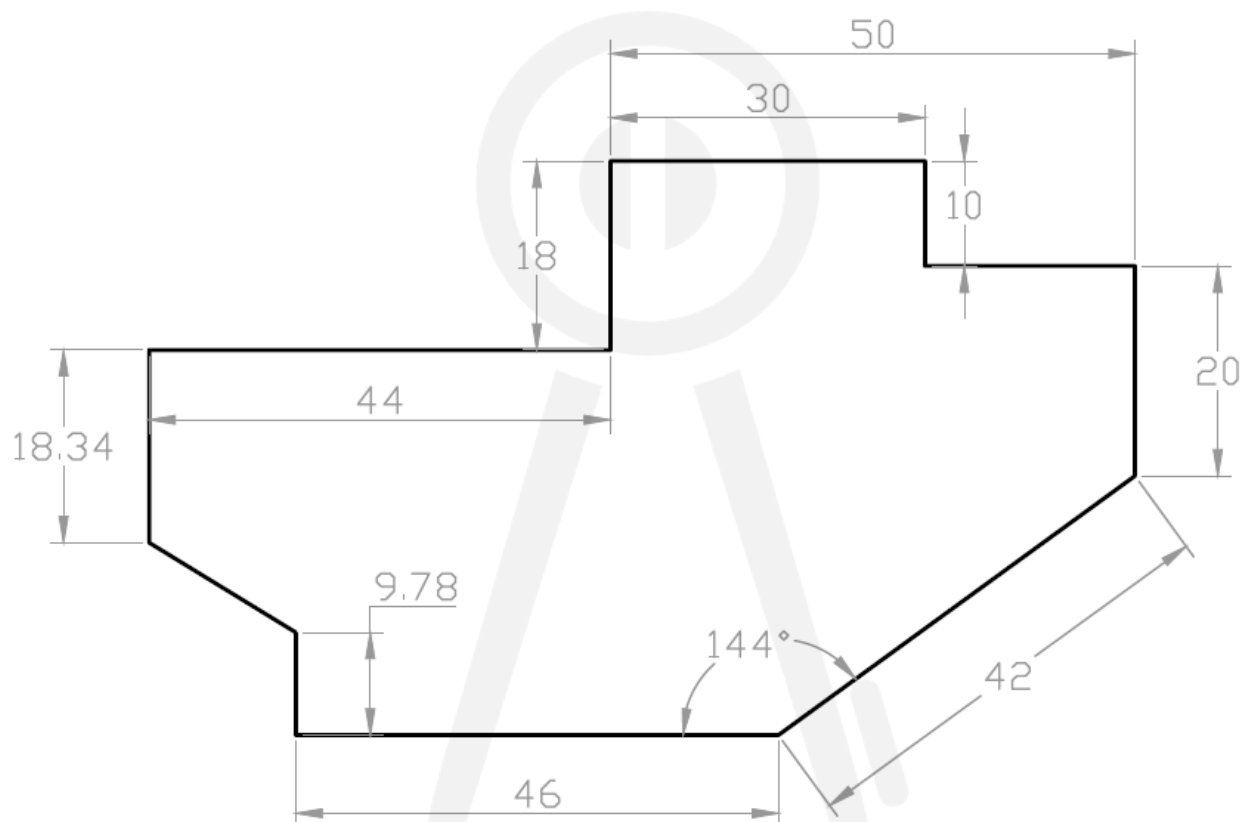
If you are stuck with any drawing and finding it difficult to make it then head over to the free companion course of this eBook to see the video explanation of the drawing. To go to the companion course, click the button below.

[Click here](#)

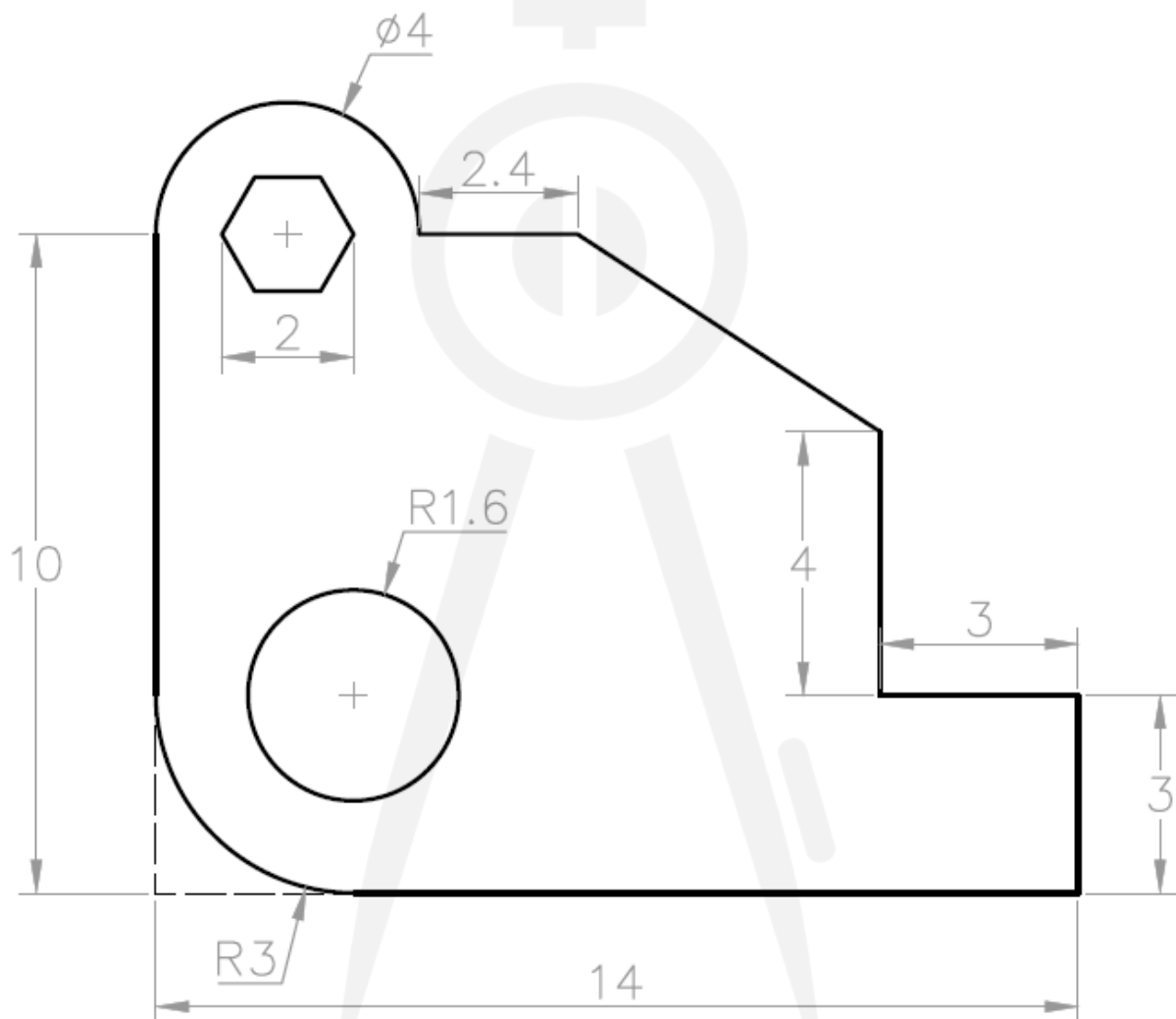
The DWG files of all drawings are provided with the download of this eBook. You will need AutoCAD 2018 or any other latest version to open these DWG files. The 3D drawings are made in First angle projection.

---

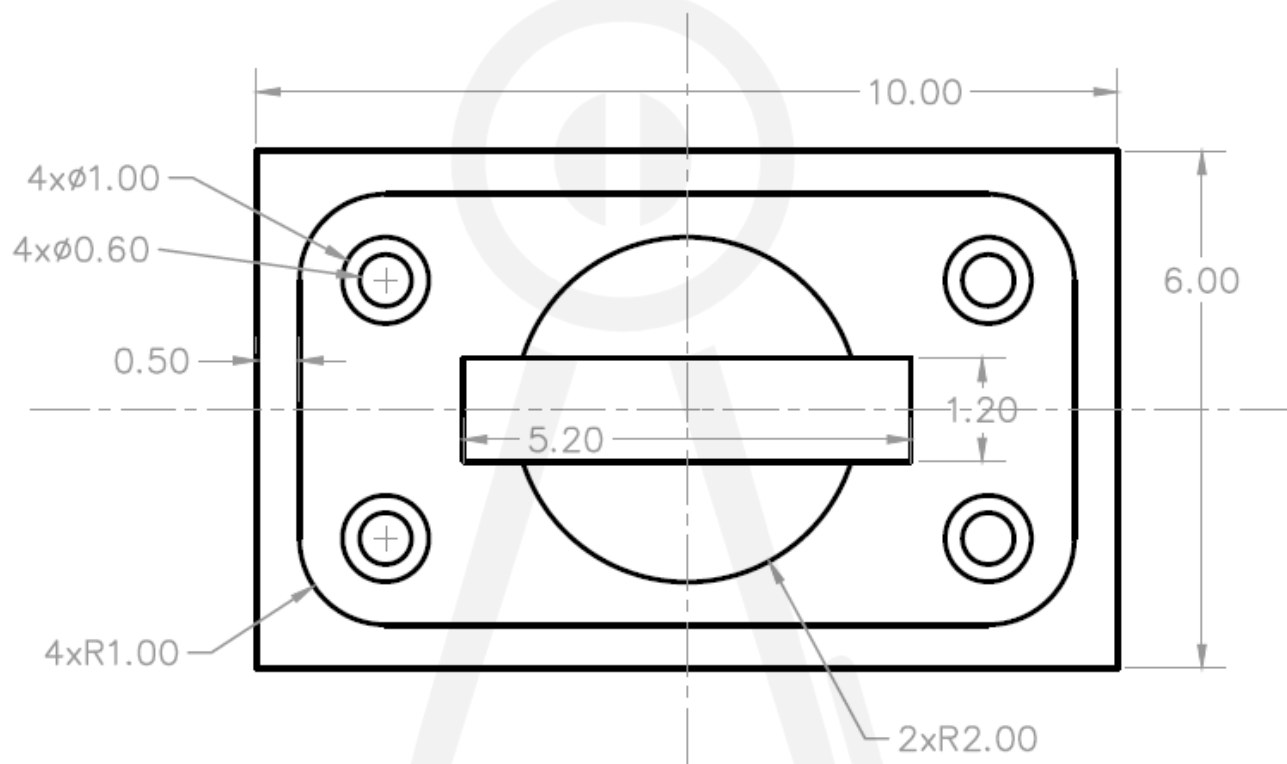
# 2D practice drawings



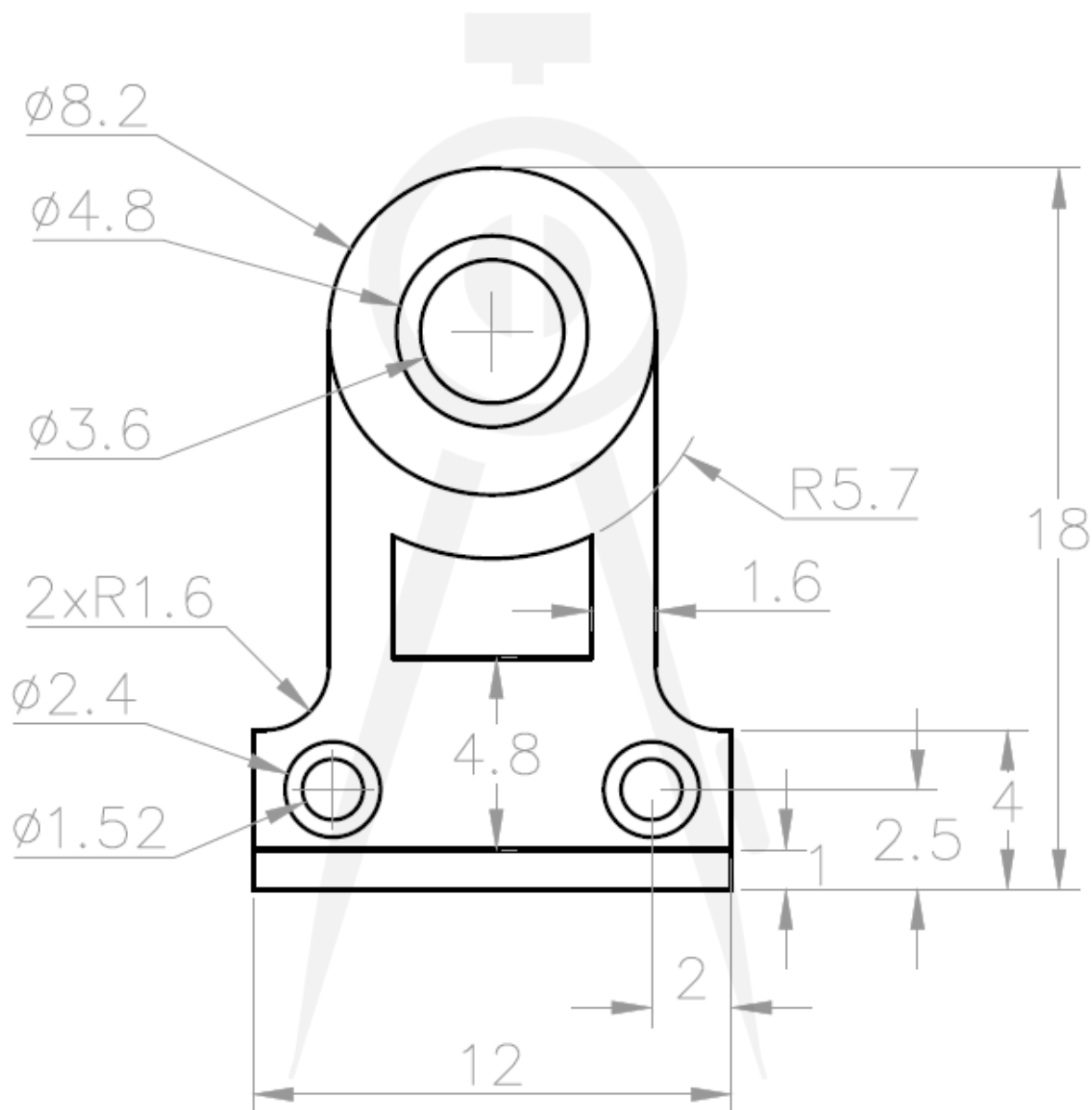
2D-1



2D-2

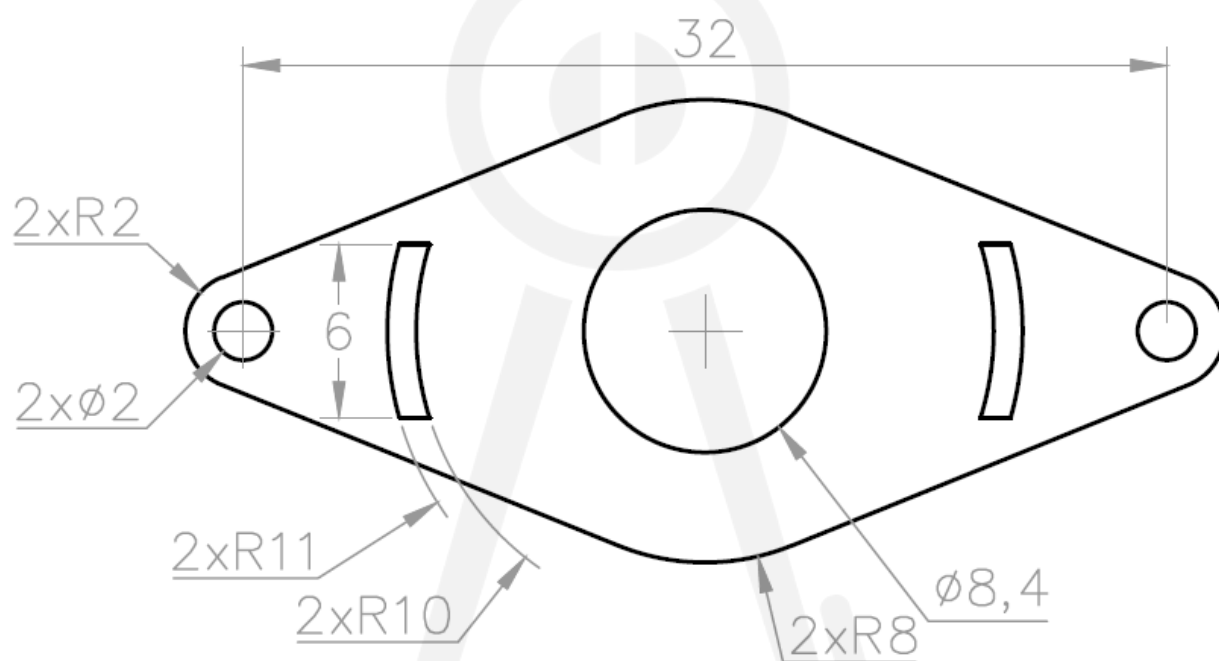


2D-3

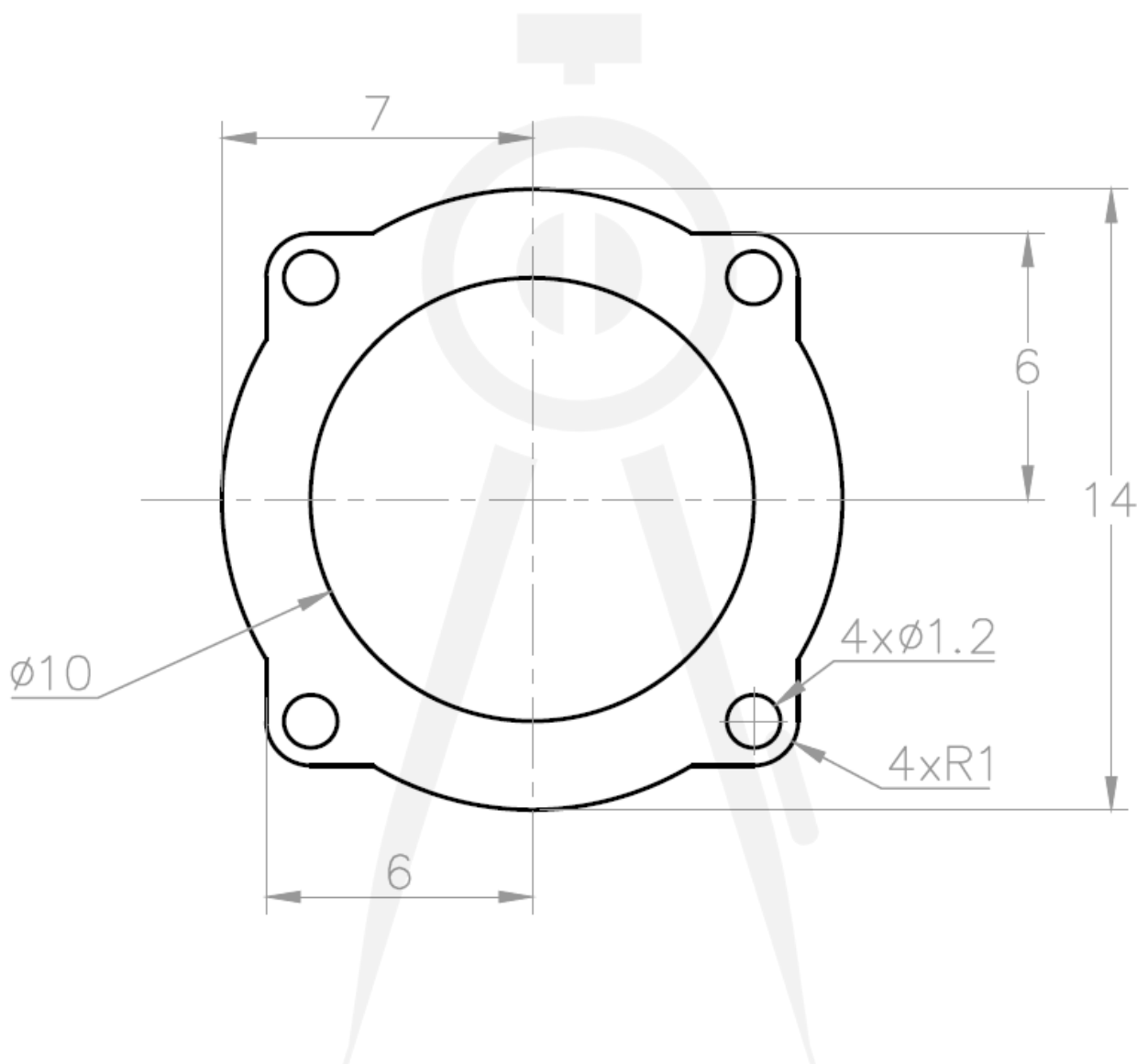


2D-4

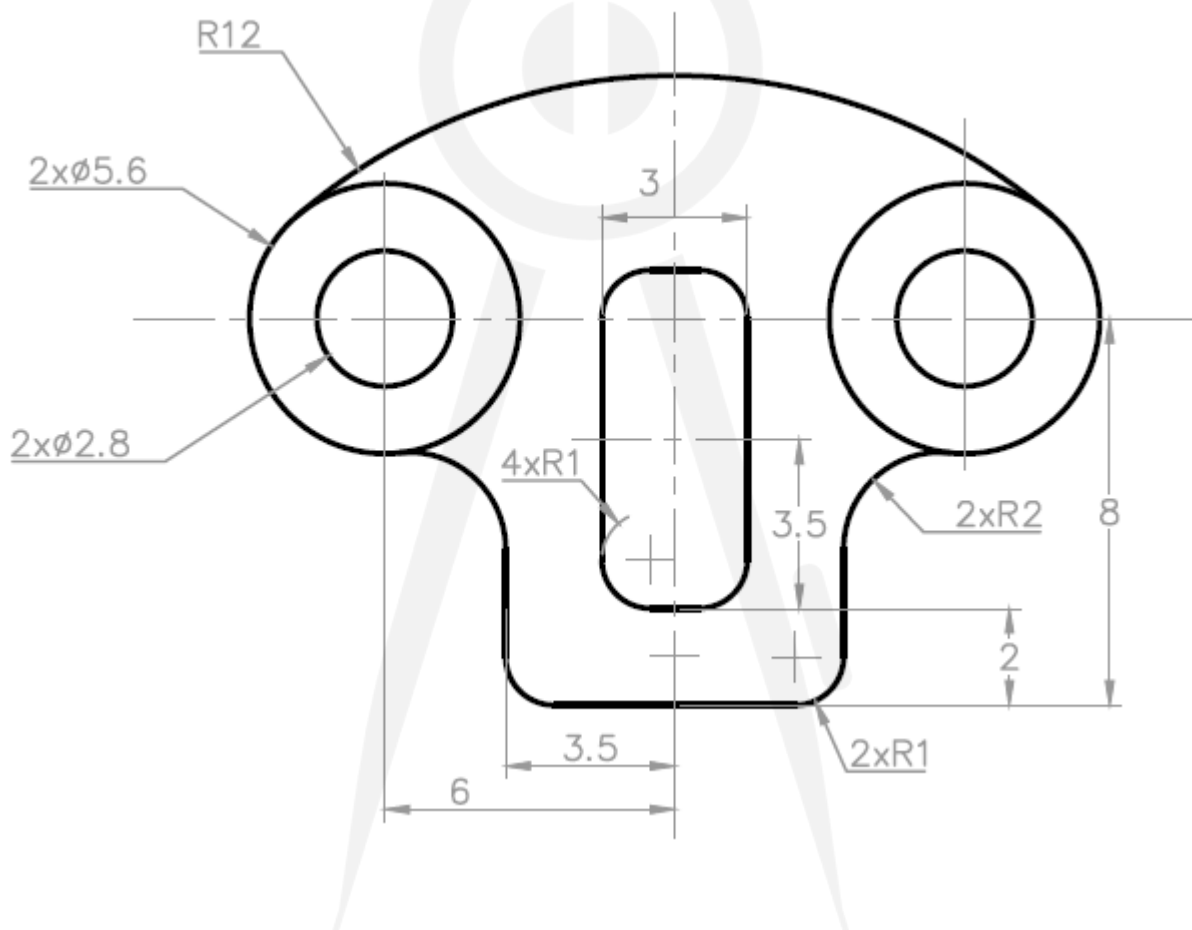




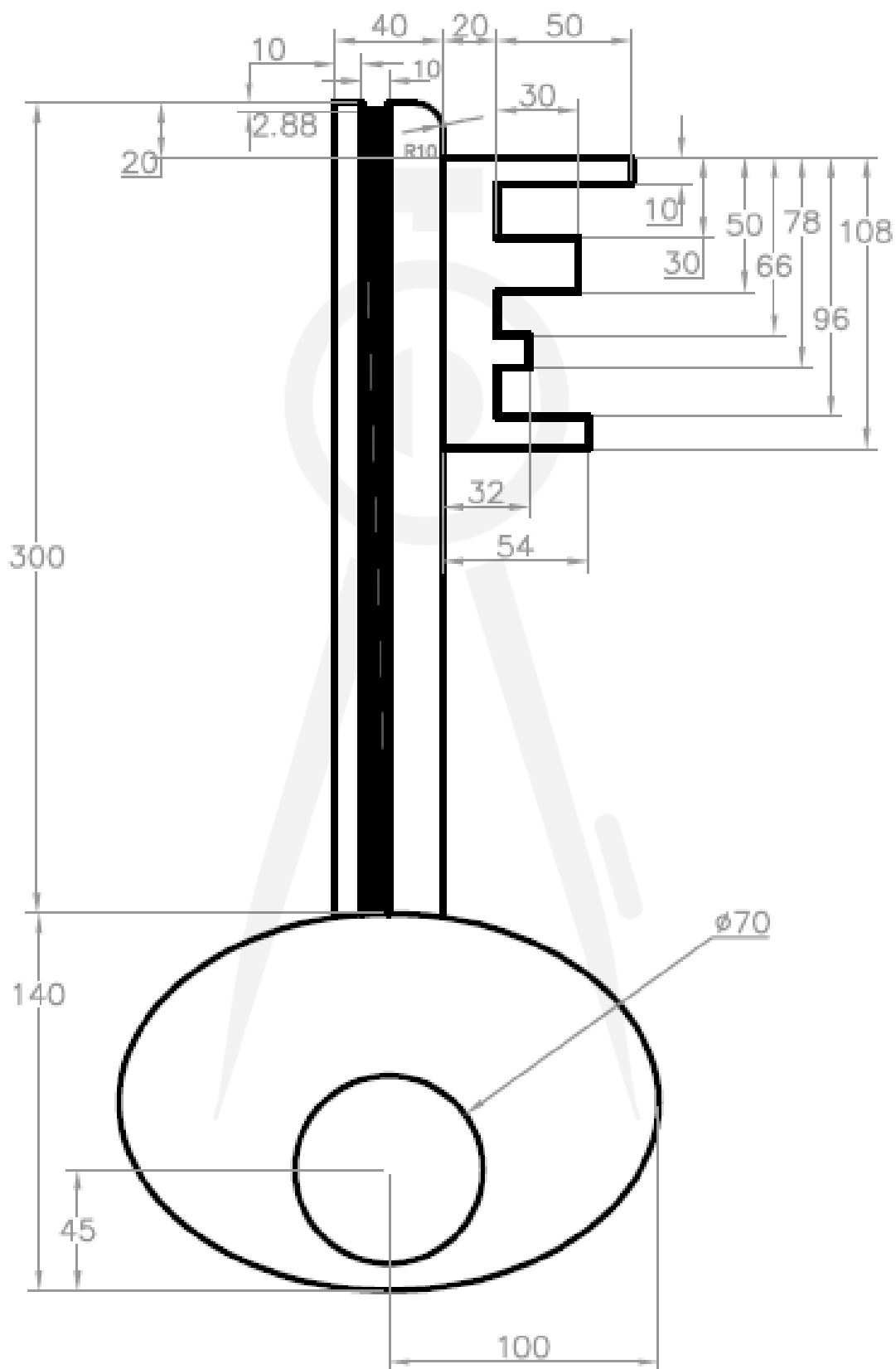
2D-5



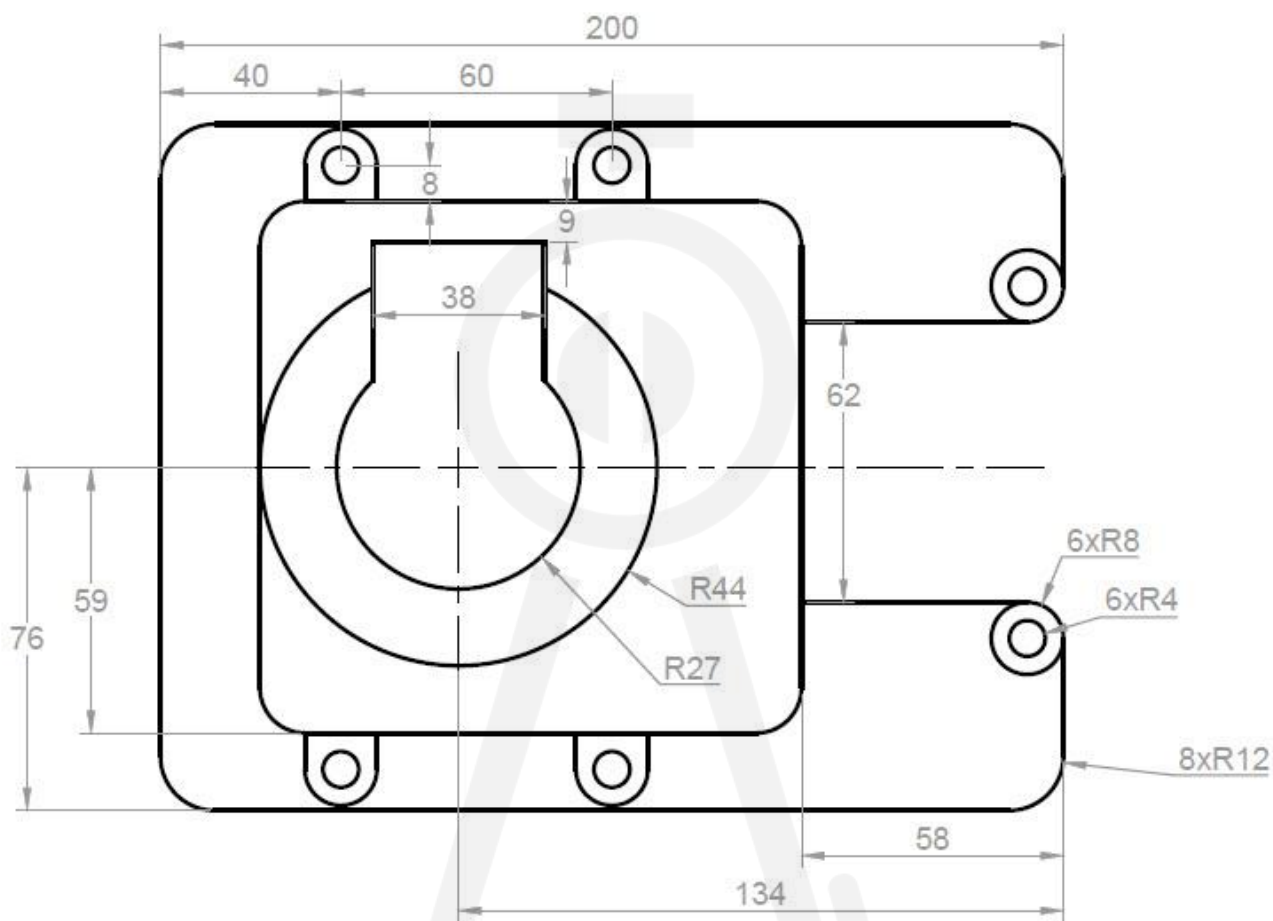
2D-6



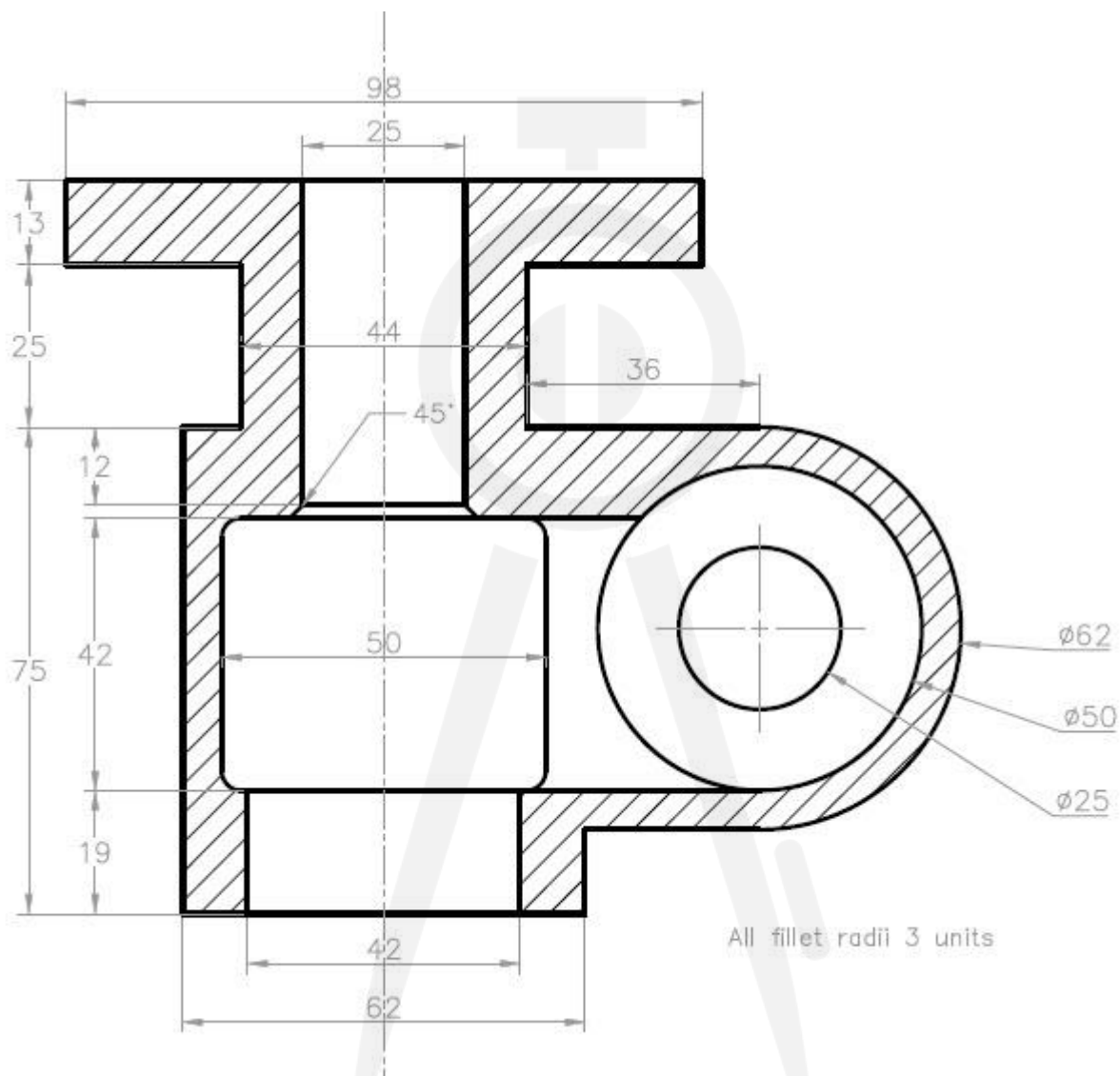
2D-7



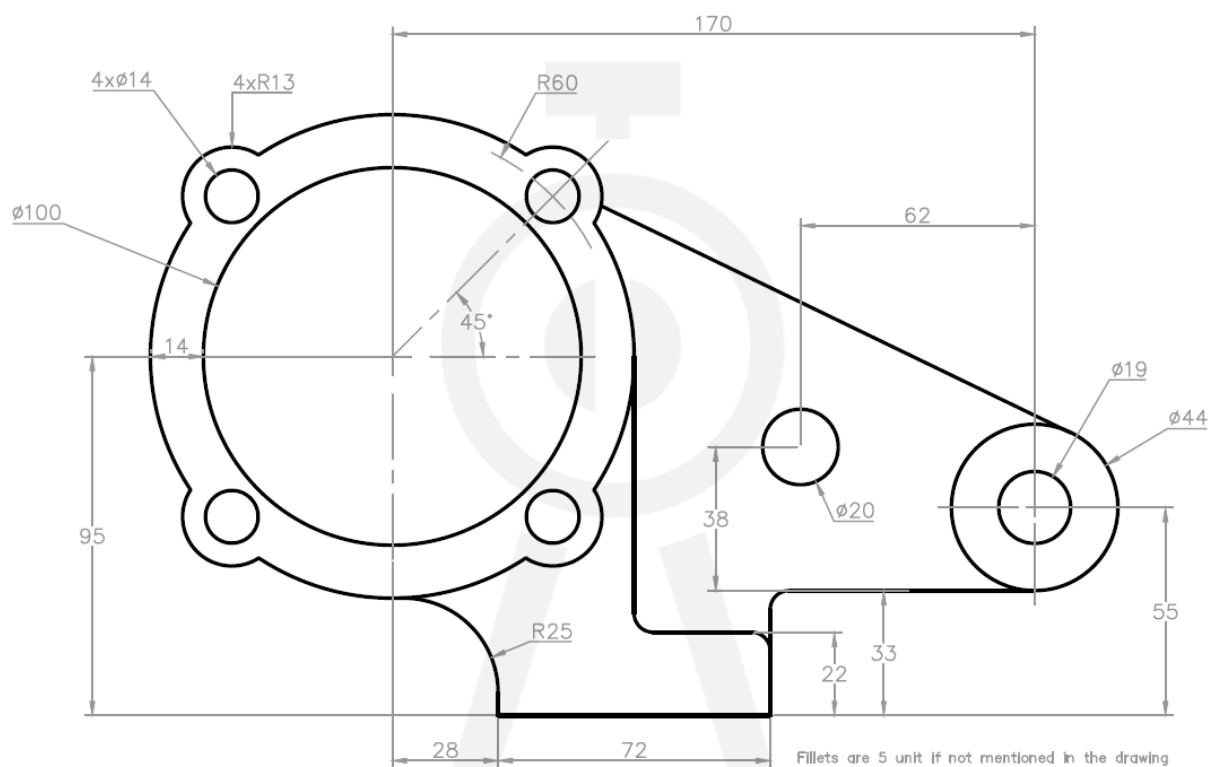
2D-8



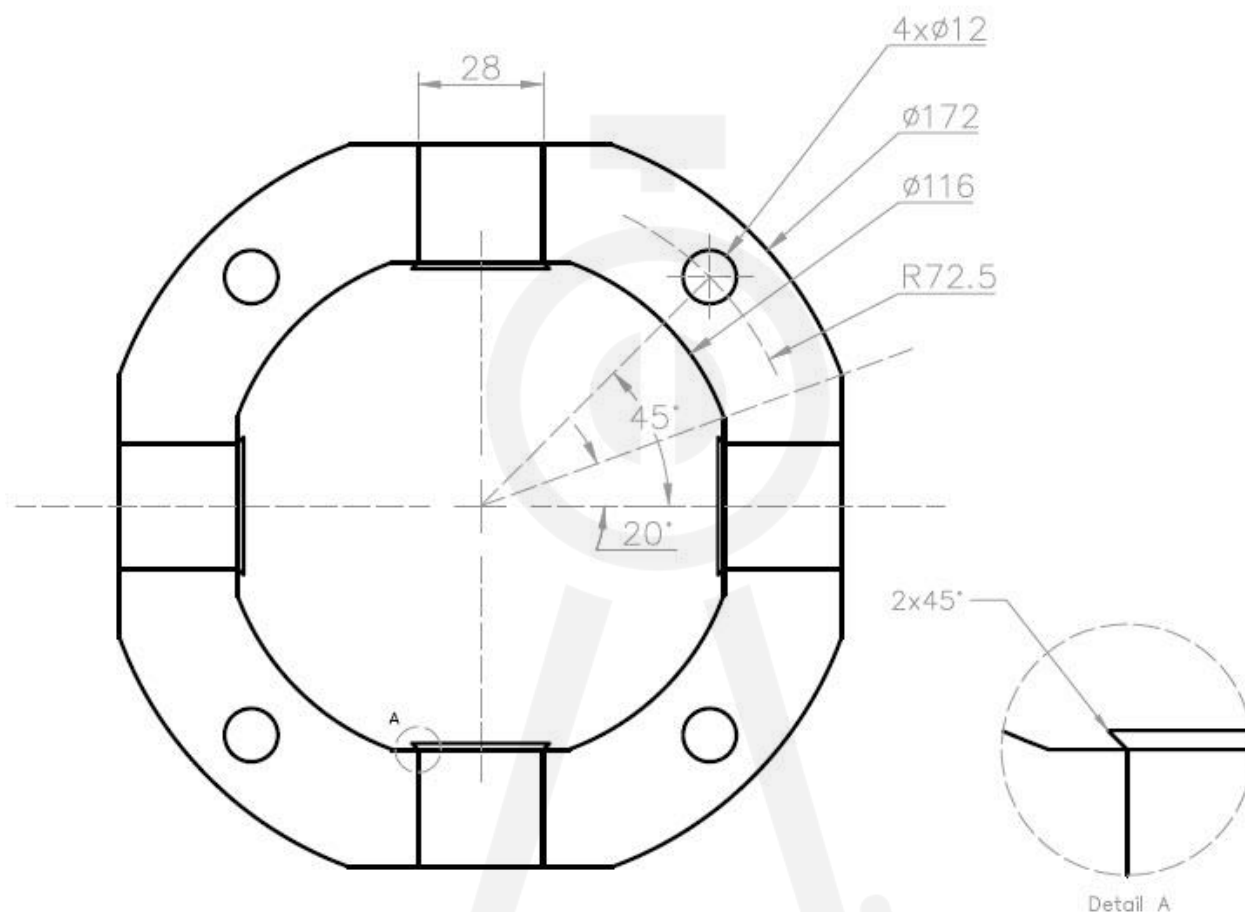
2D-9



2D-10

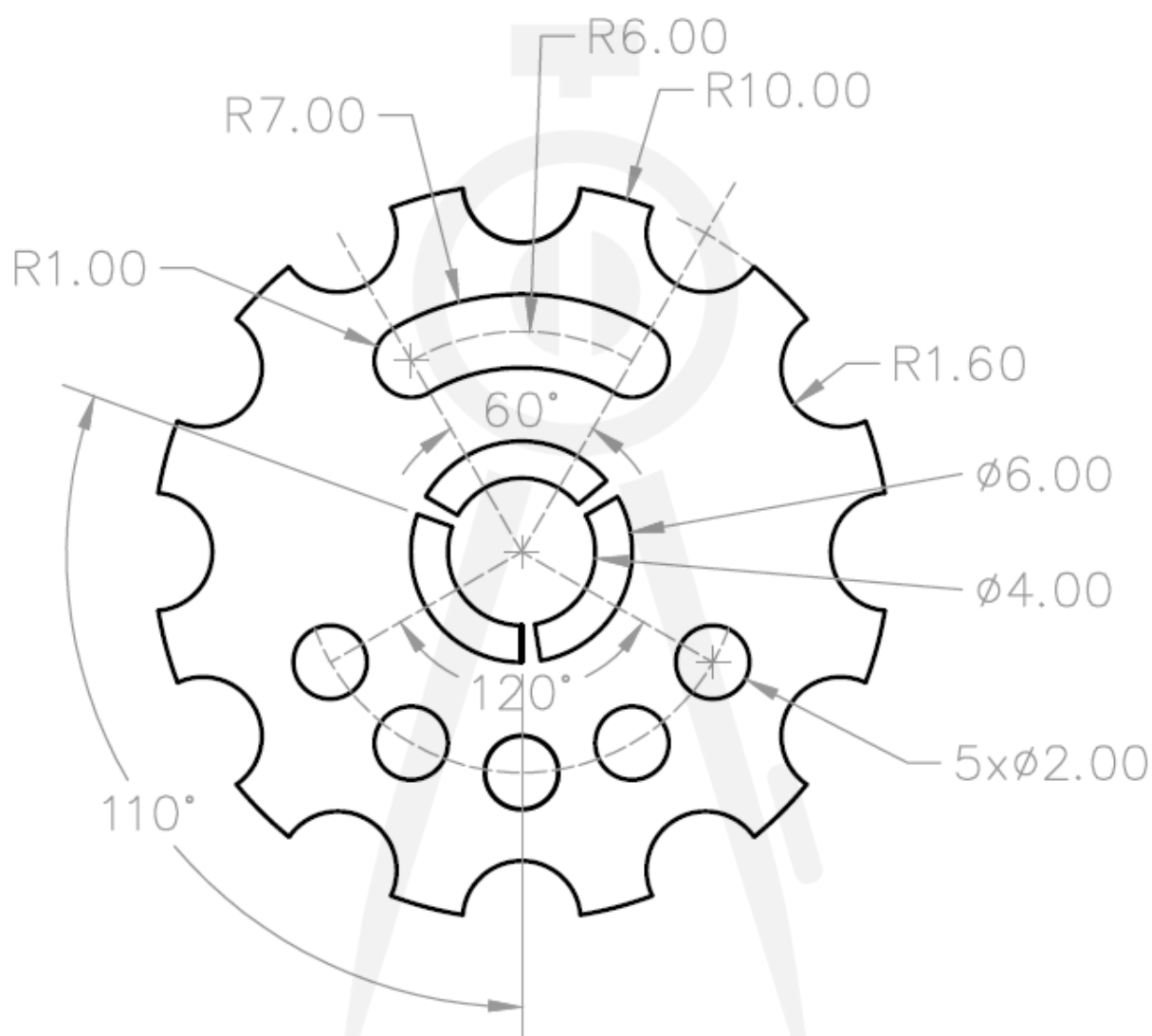


2D-11

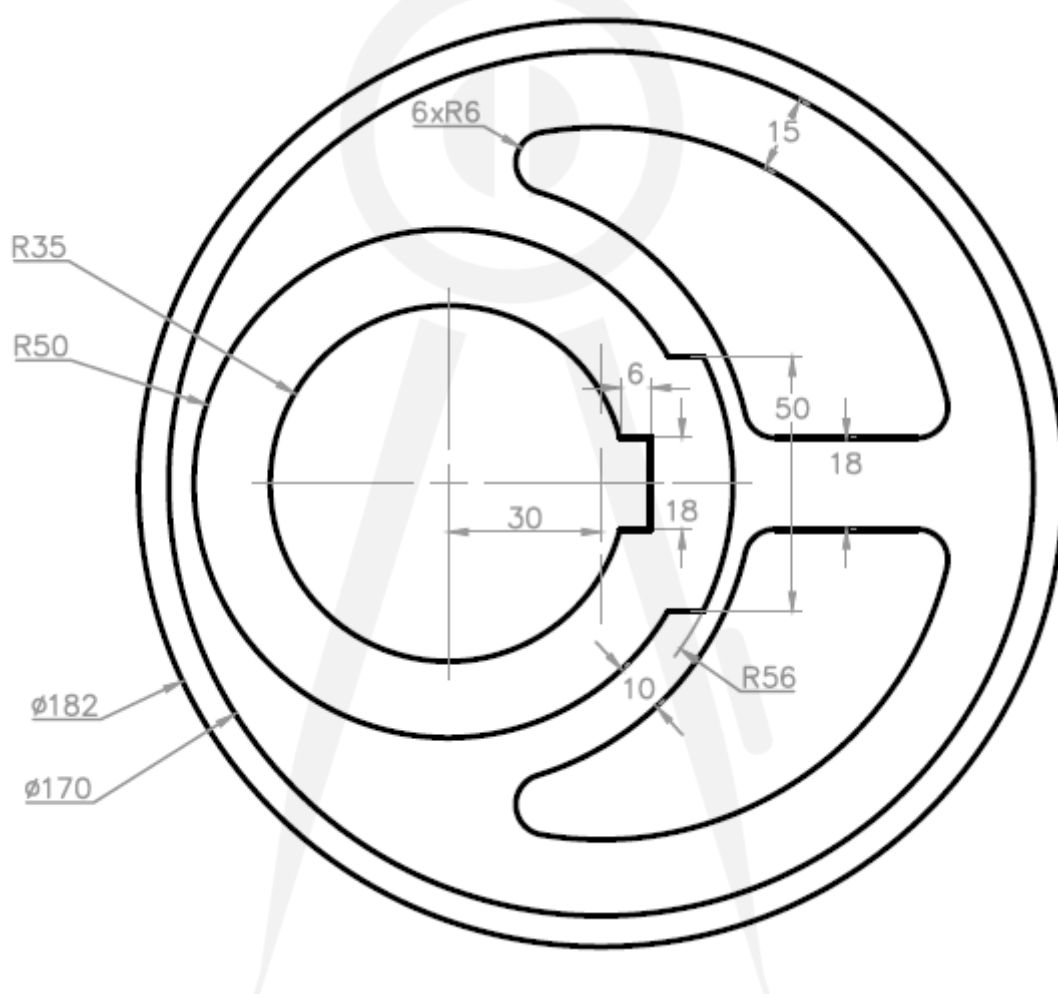


2D-12

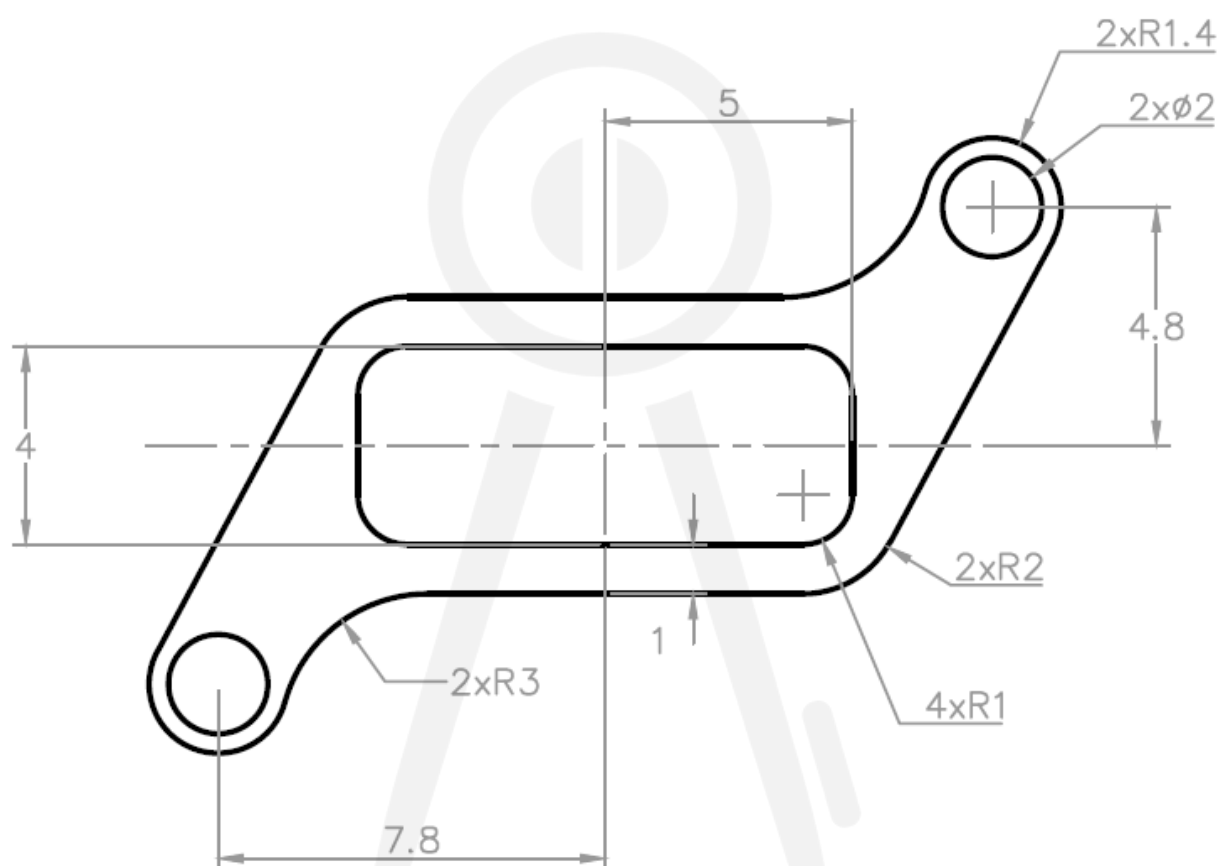




2D-13



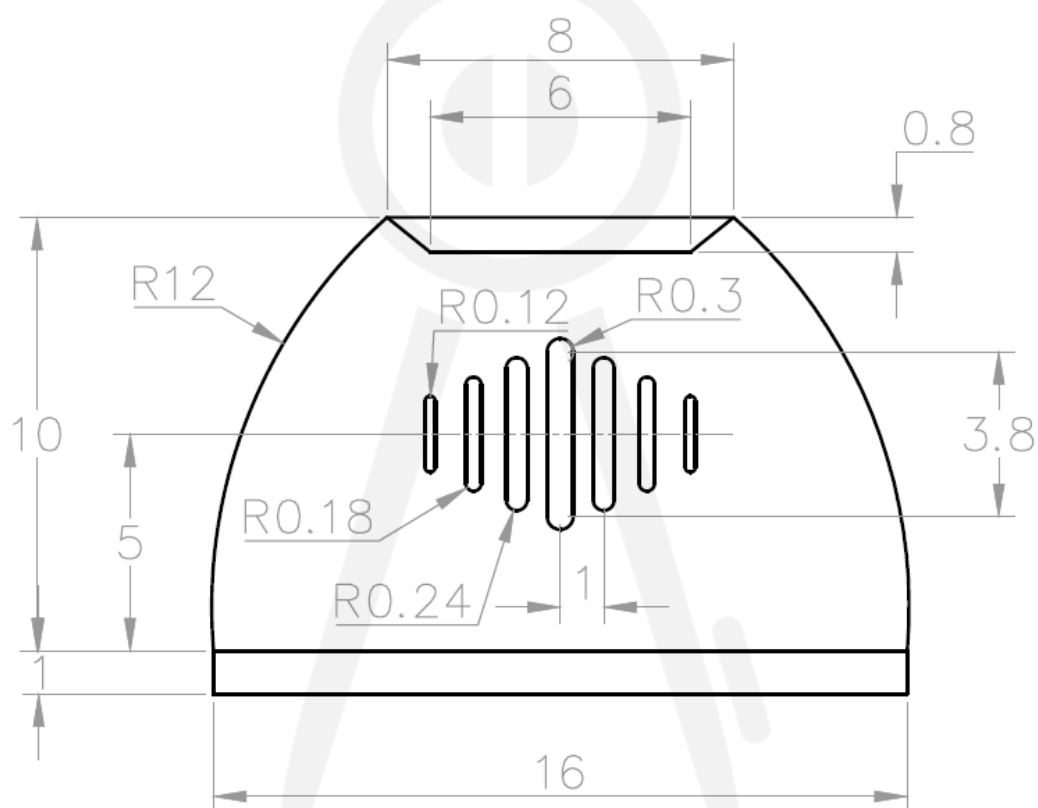
2D-14



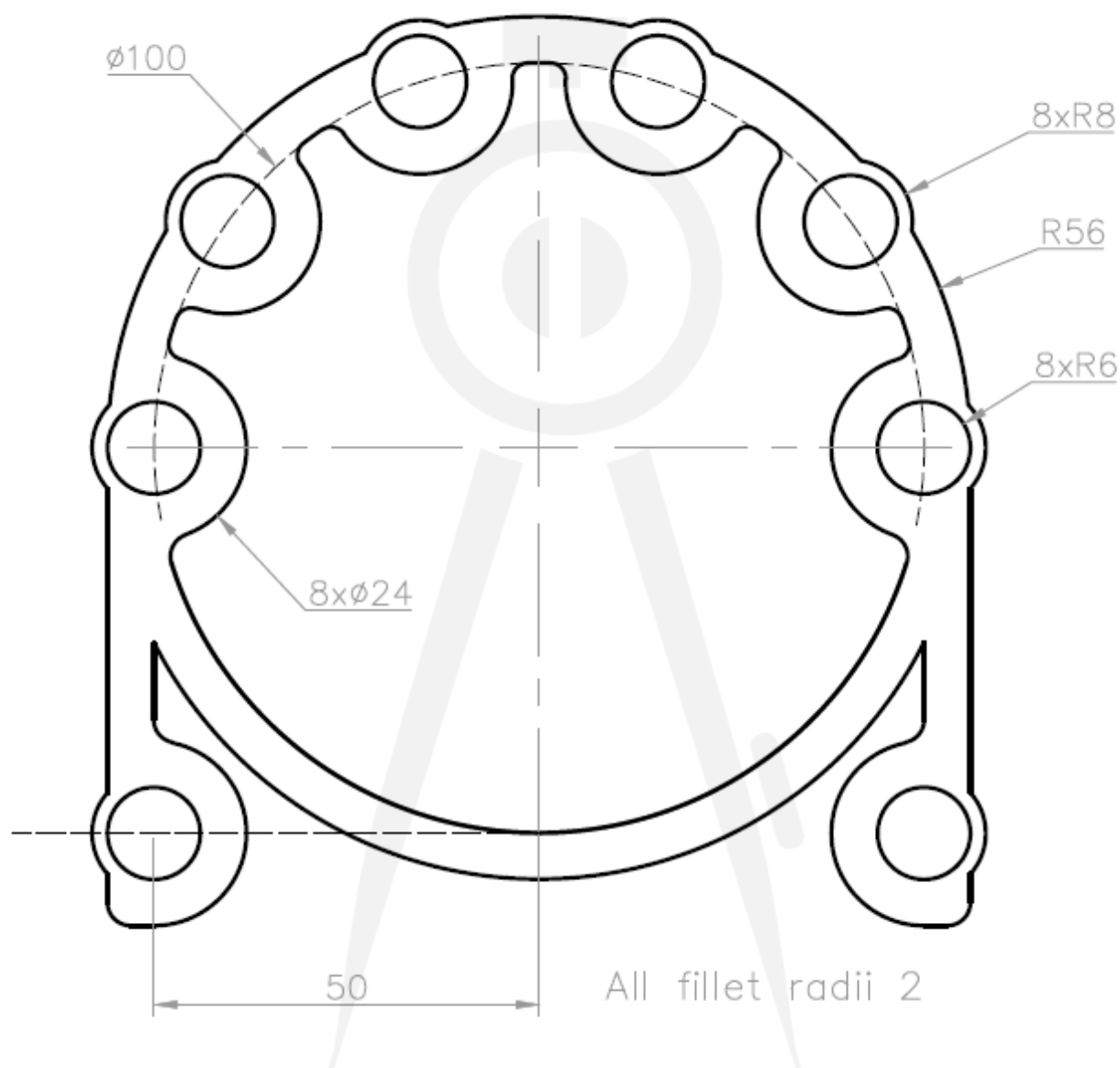
2D-15



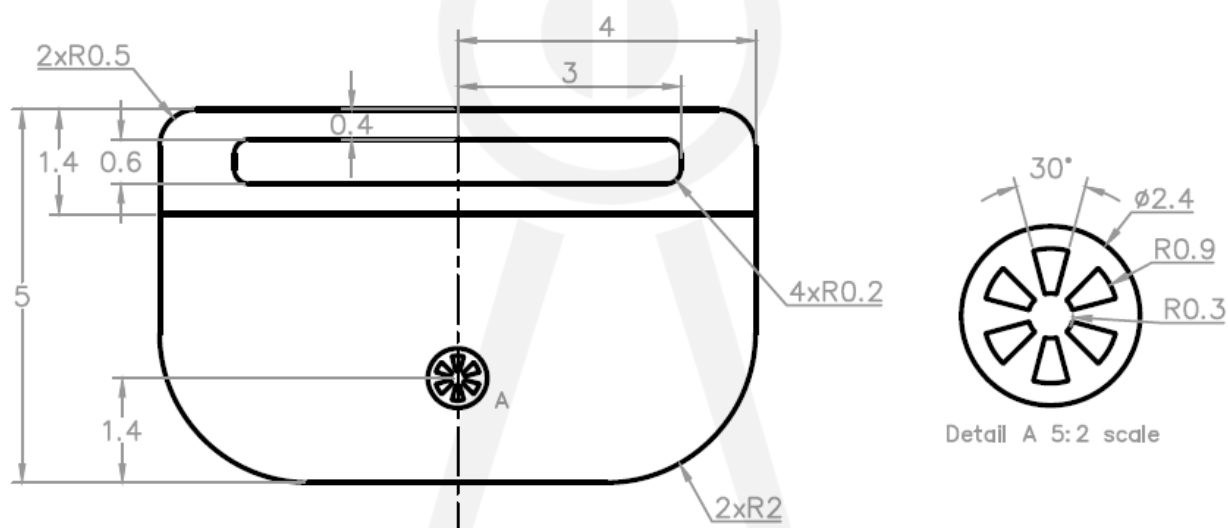
**2D-16**



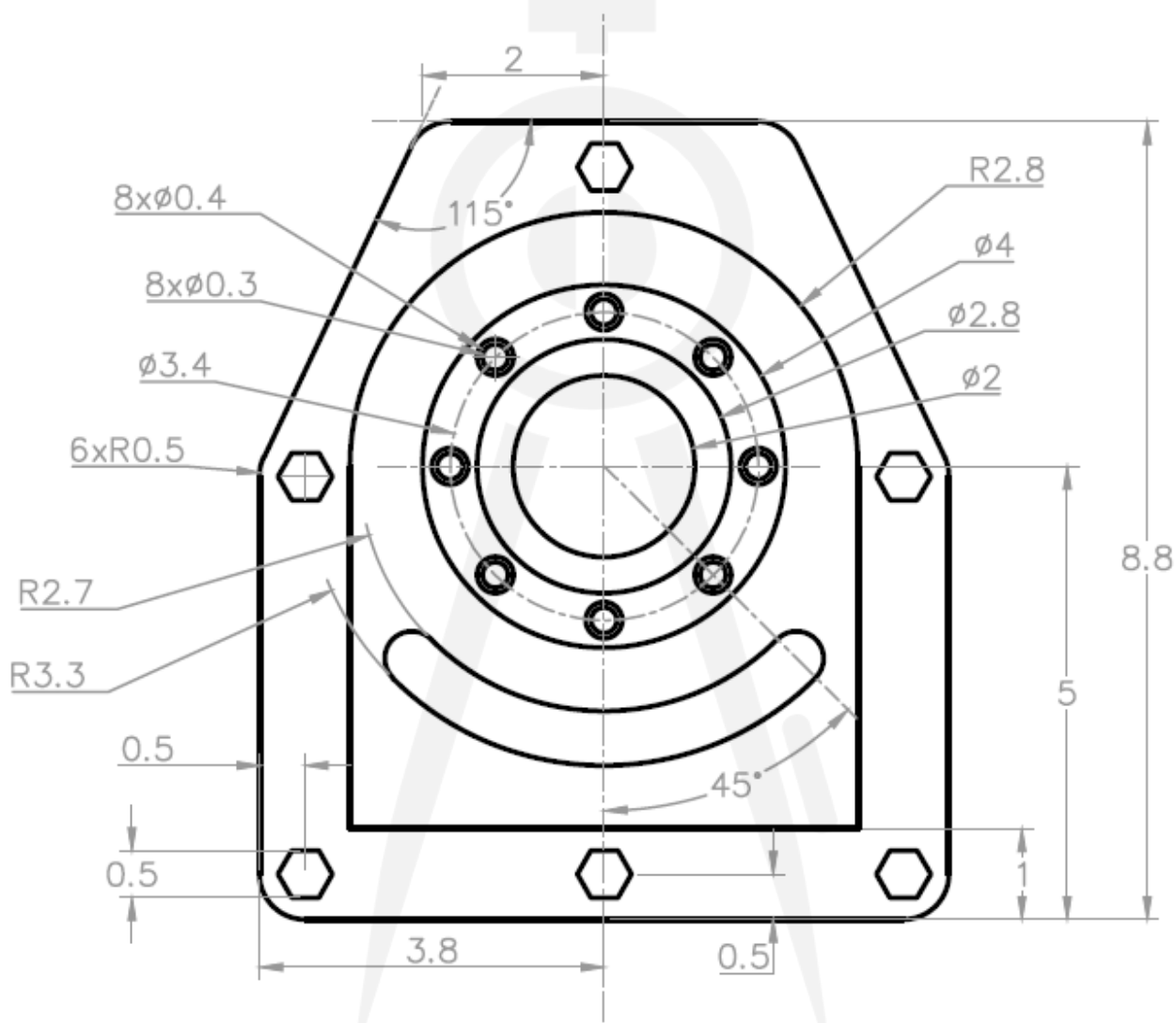
2D-17



2D-18

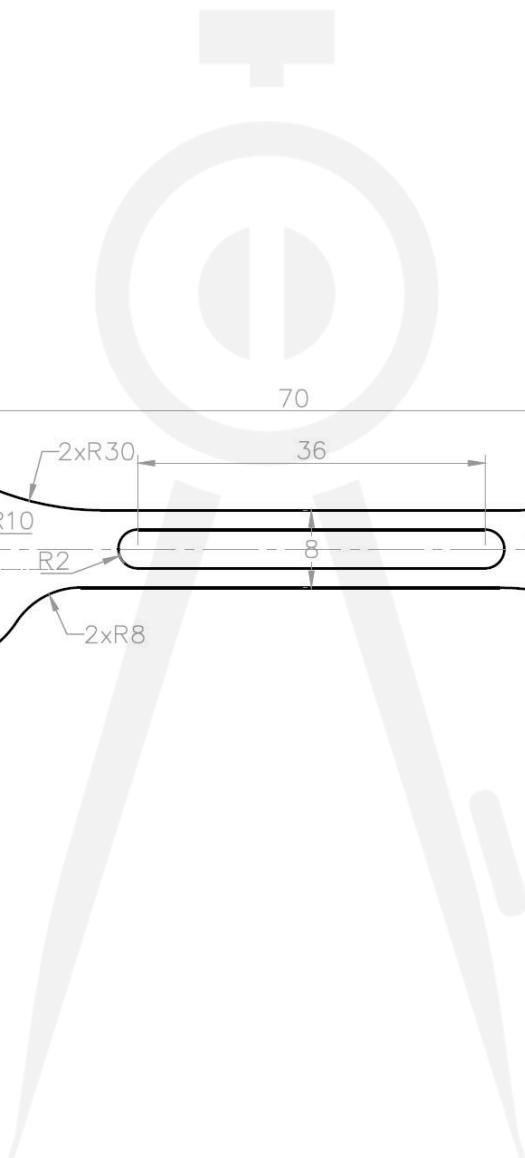


2D-19

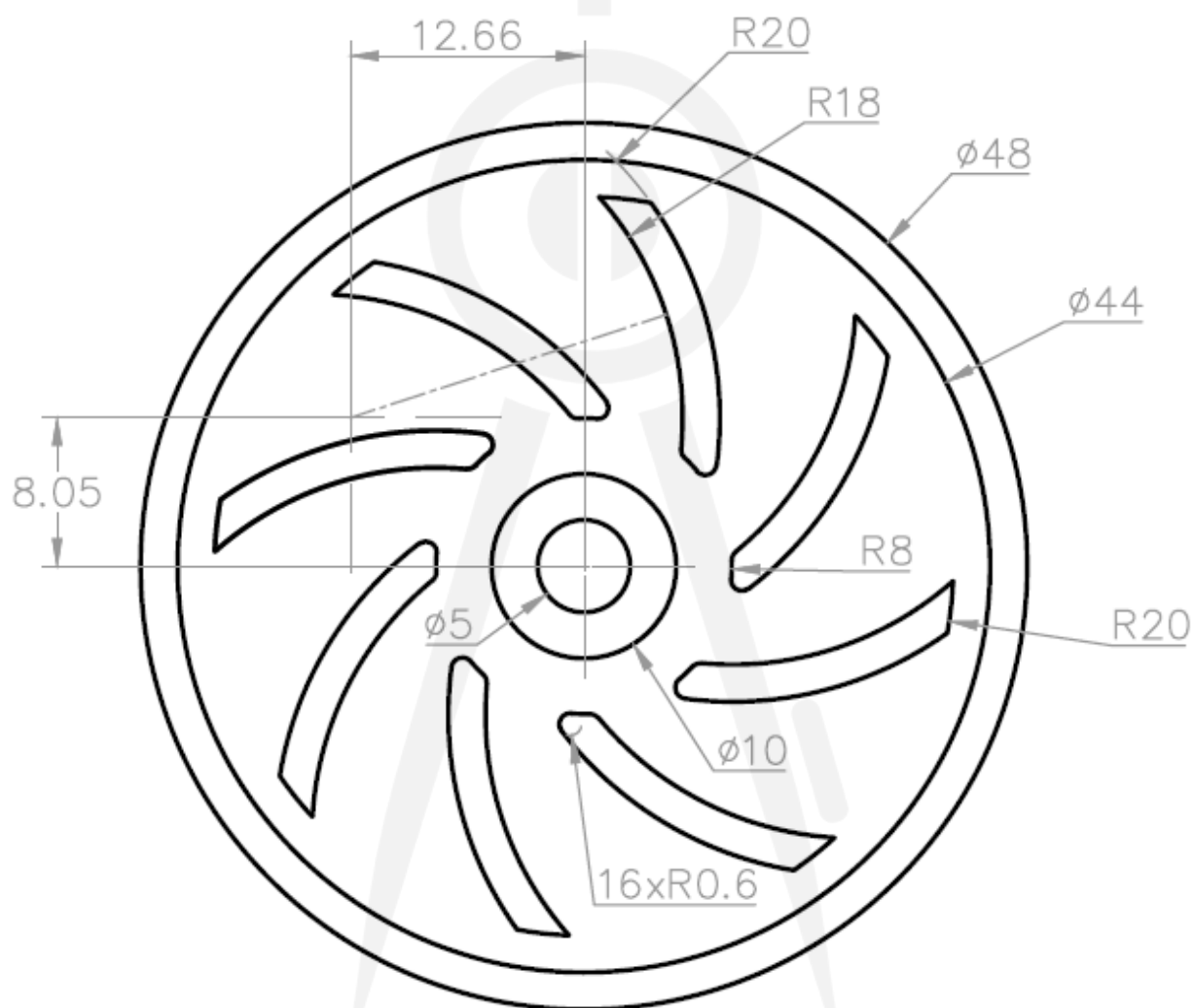


2D-20

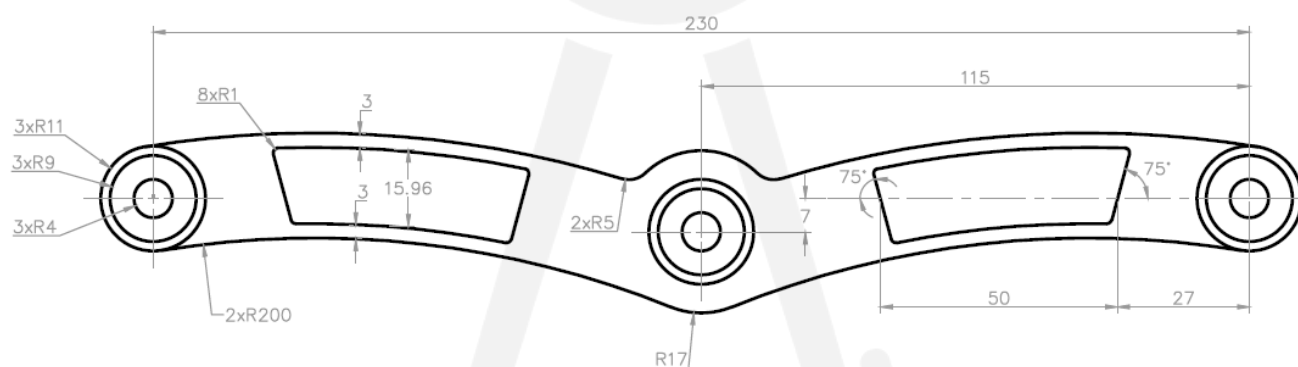




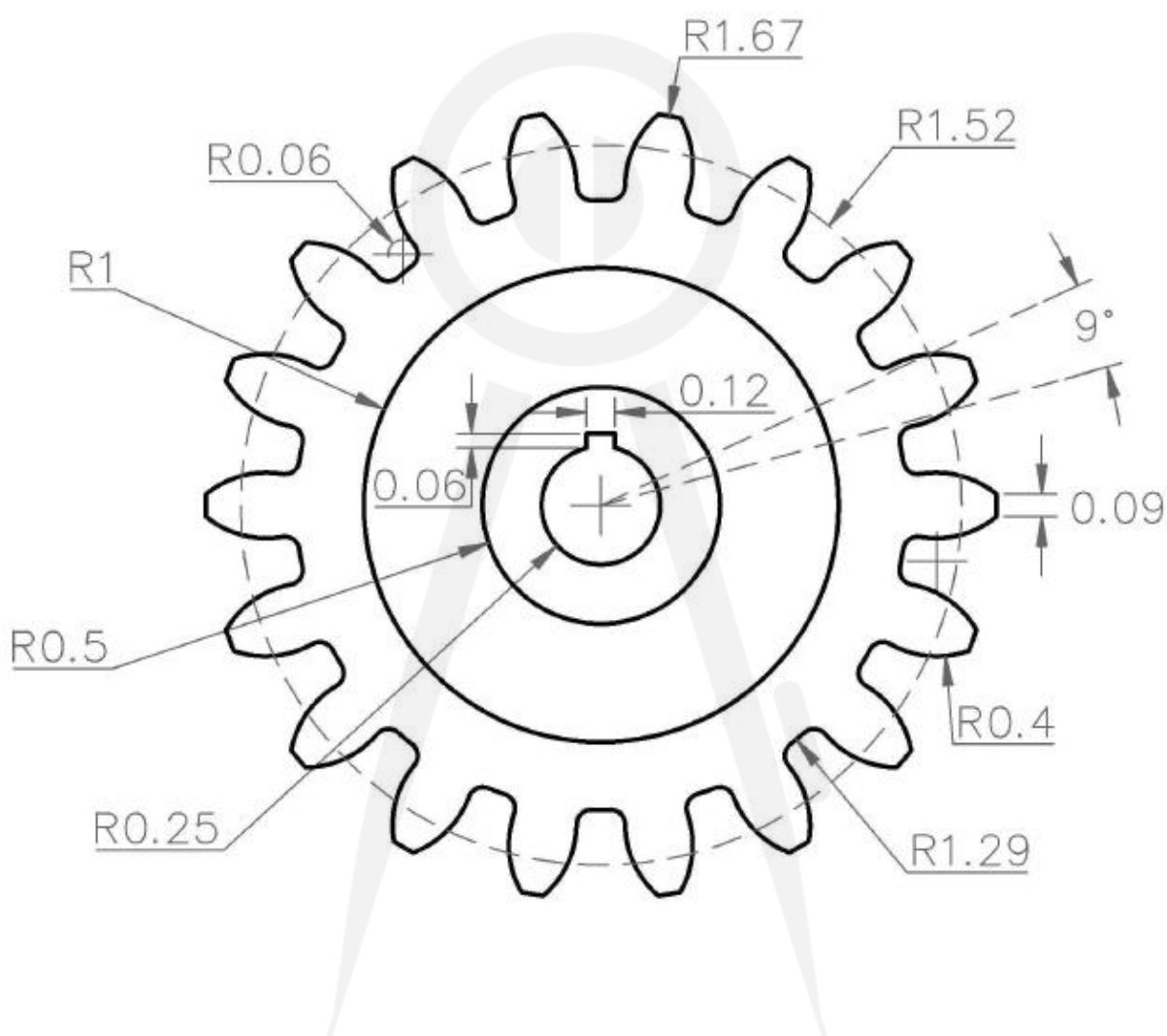
**2D-21**



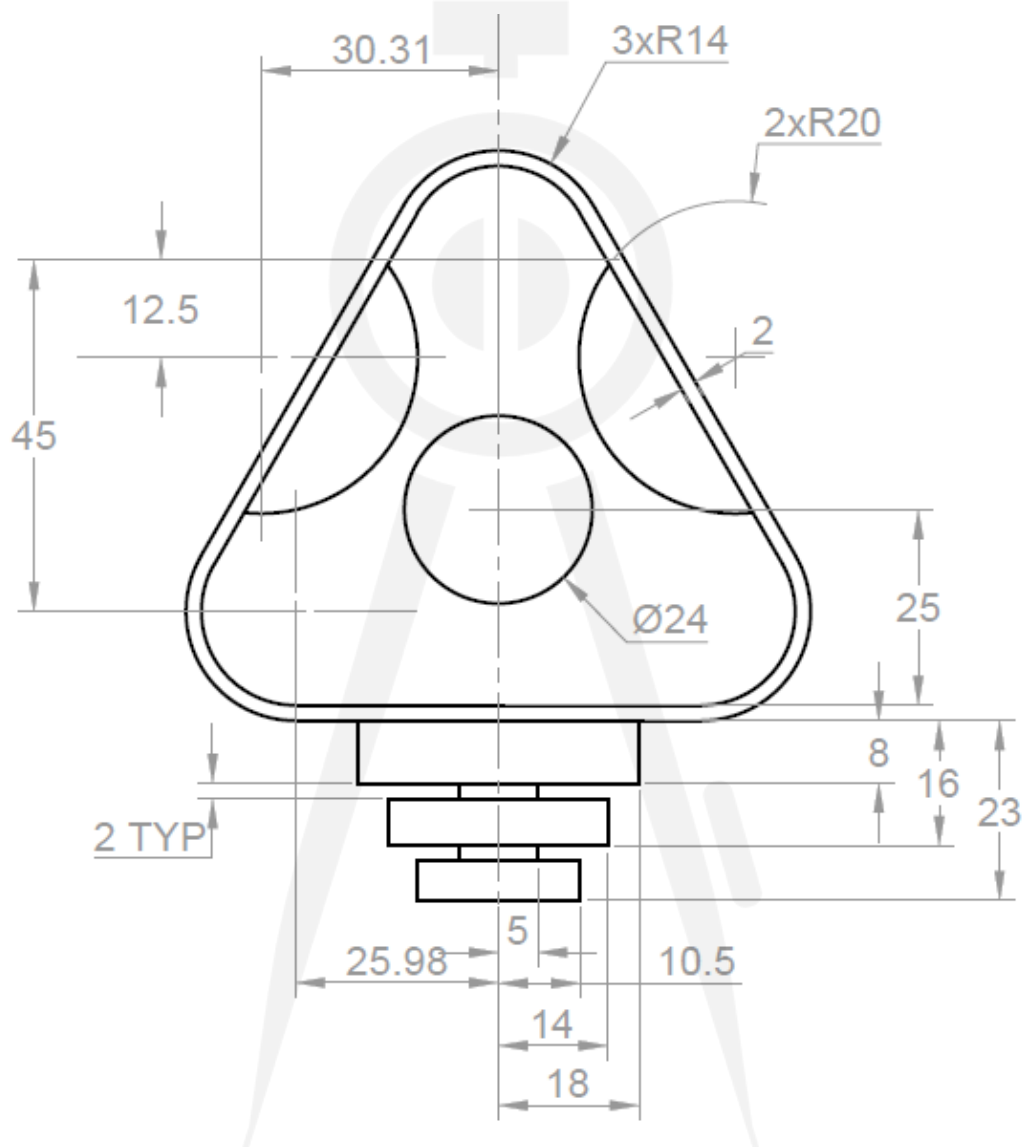
2D-22



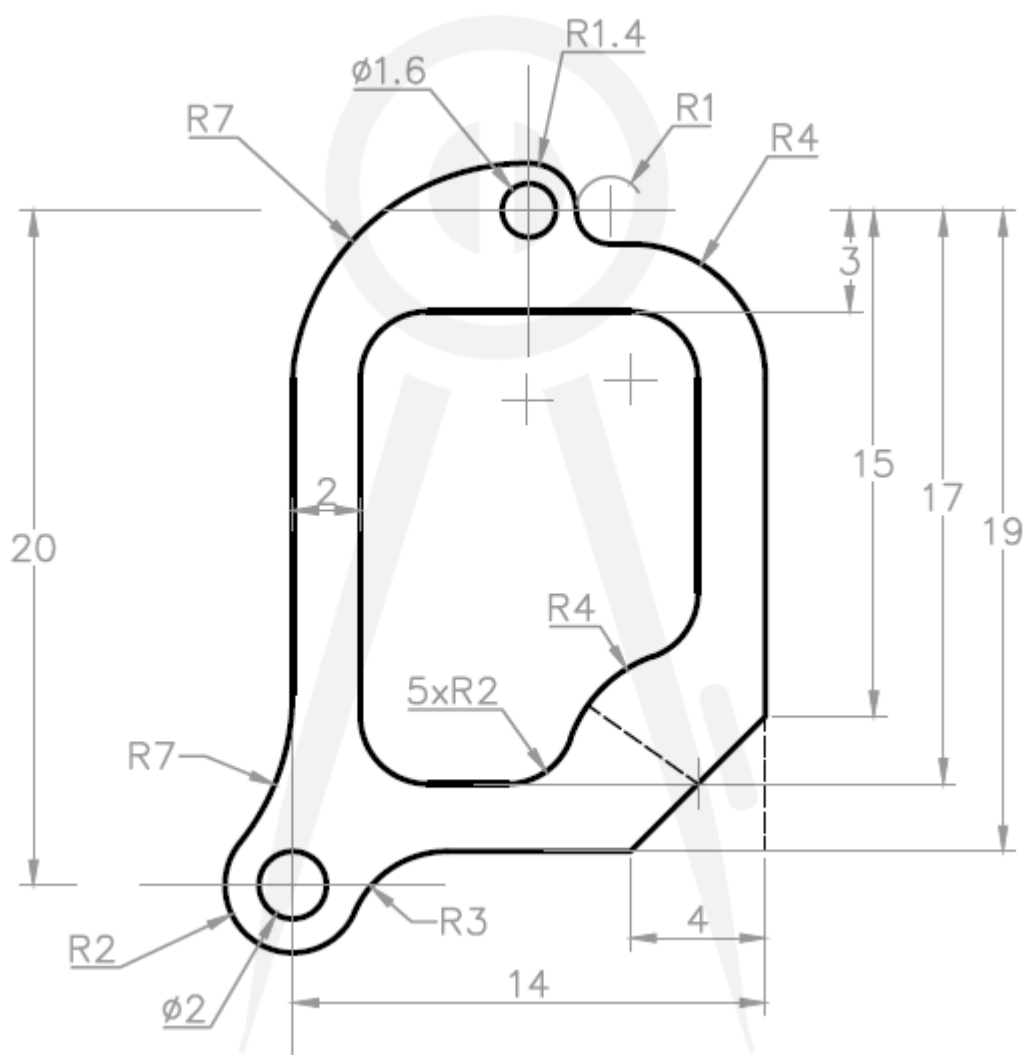
2D-23



2D-24



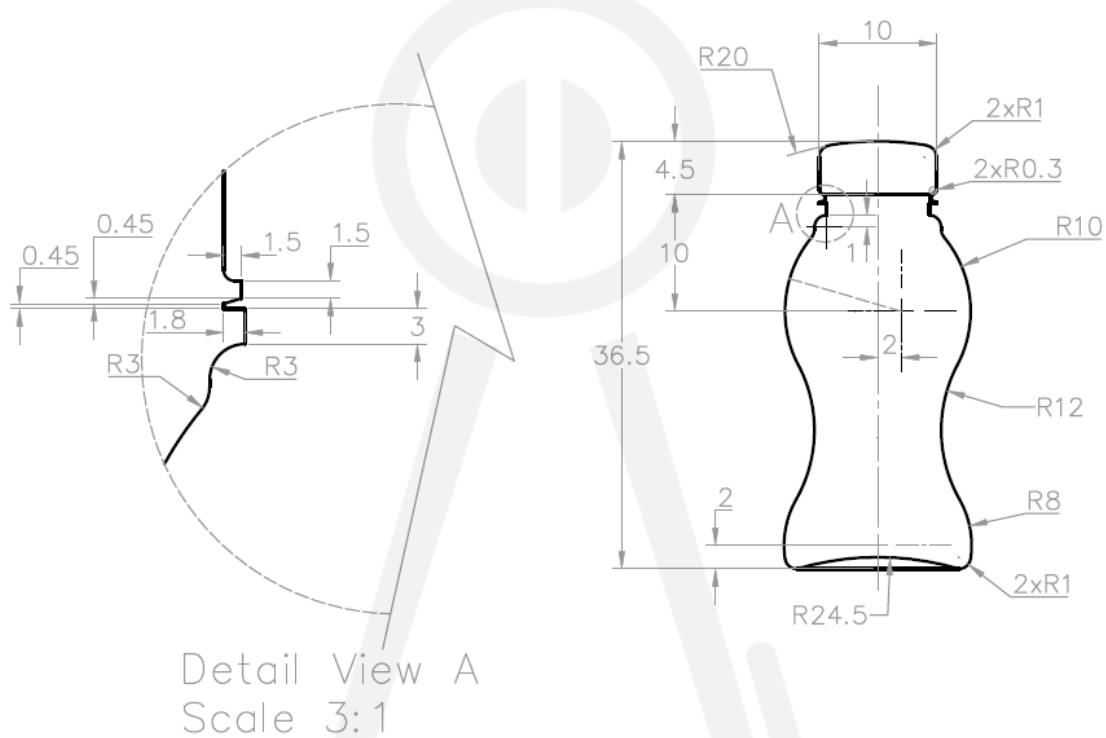
2D-25



2D-26

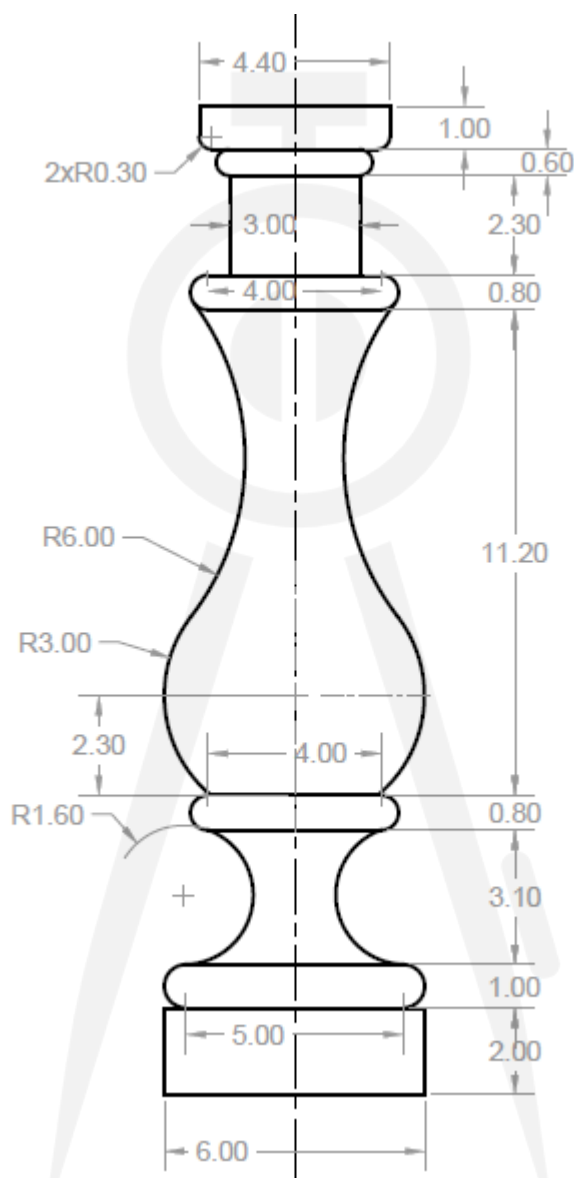


**2D-27**

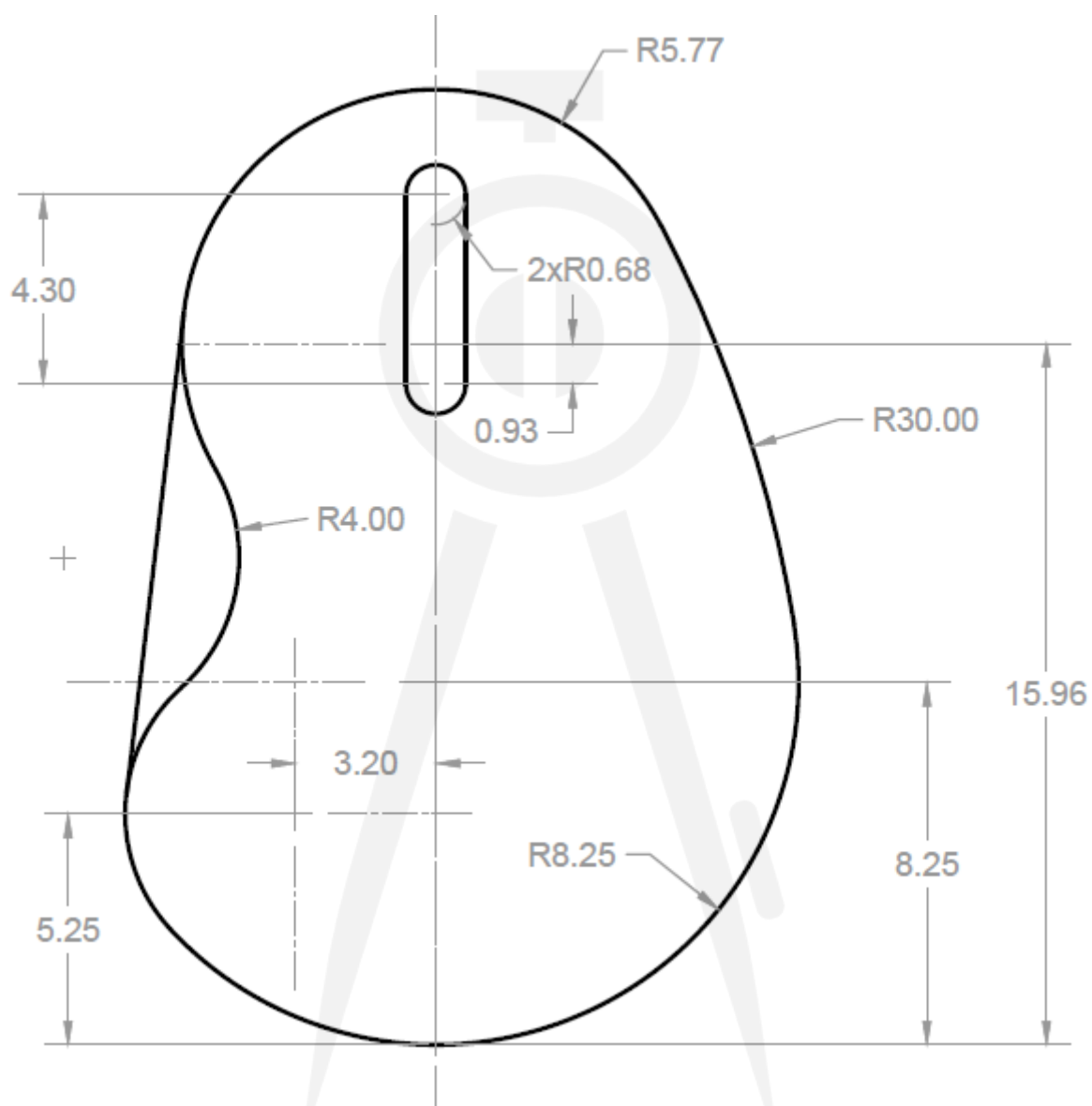


2D-28





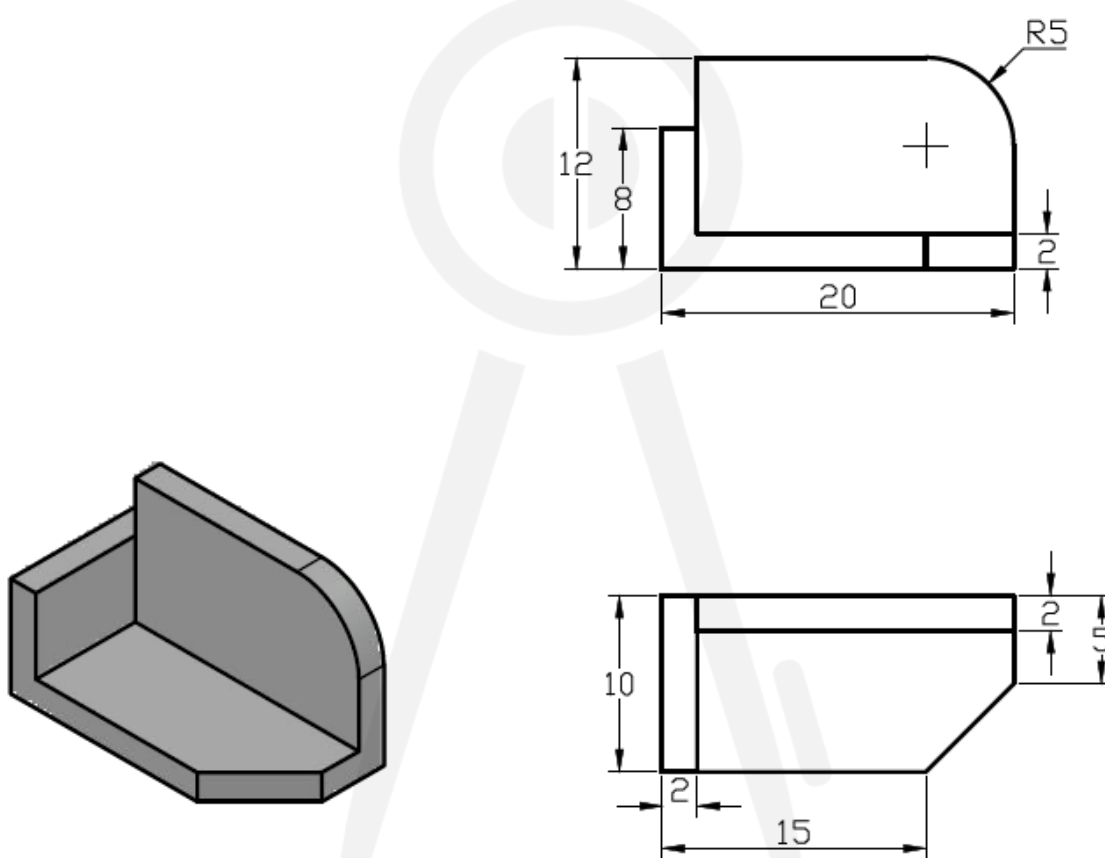
2D-29



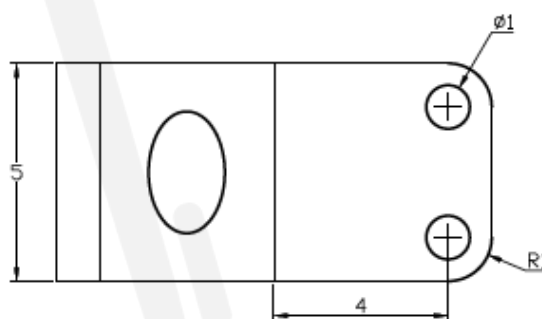
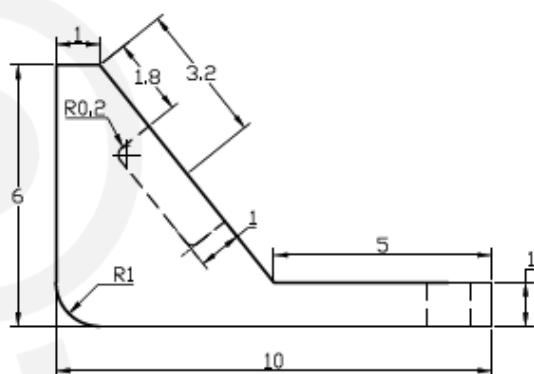
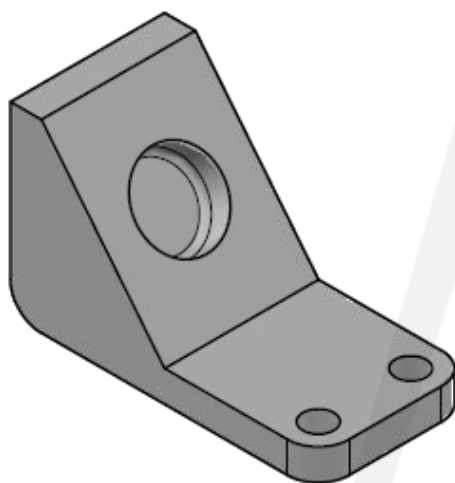
2D-30

---

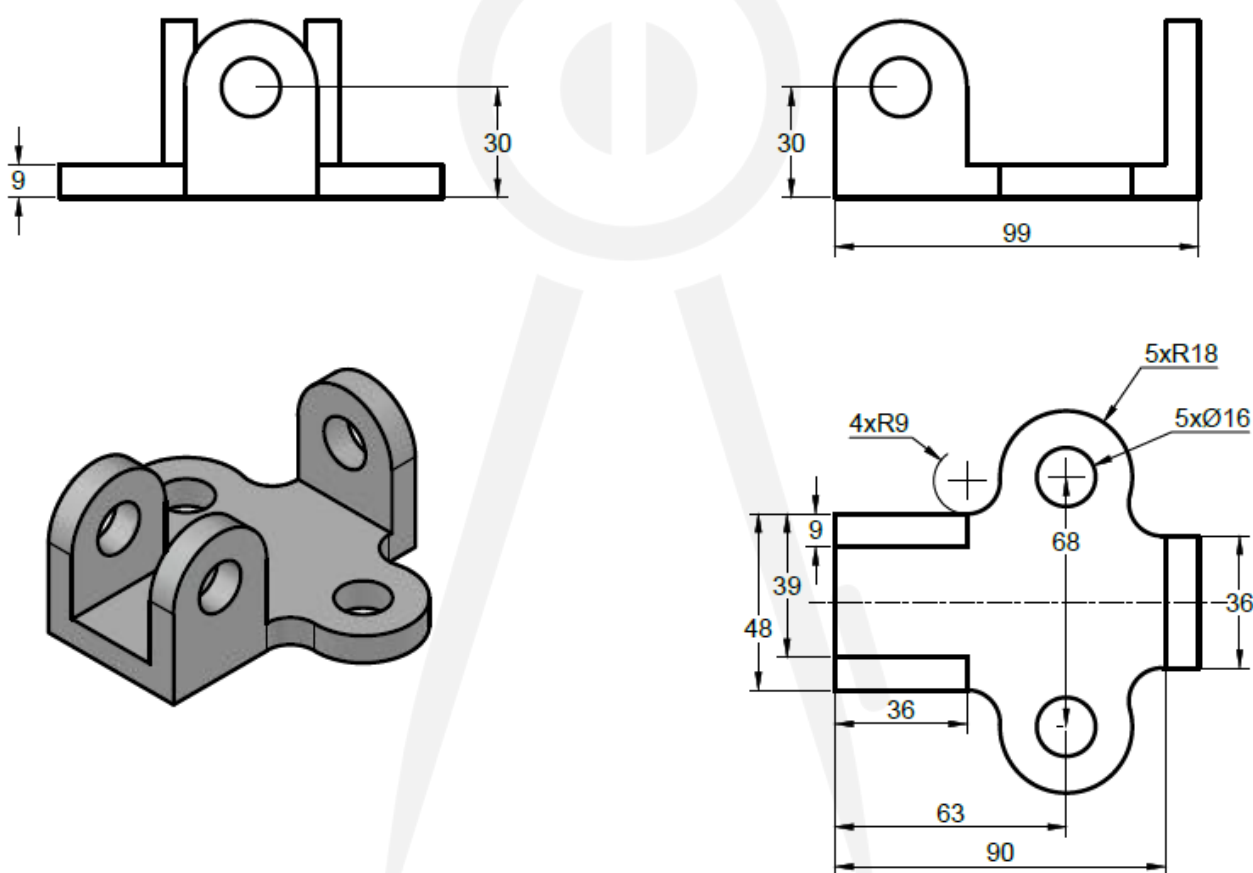
# 3D practice drawings



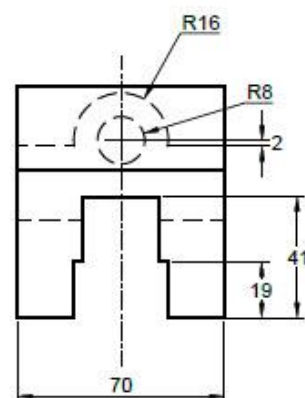
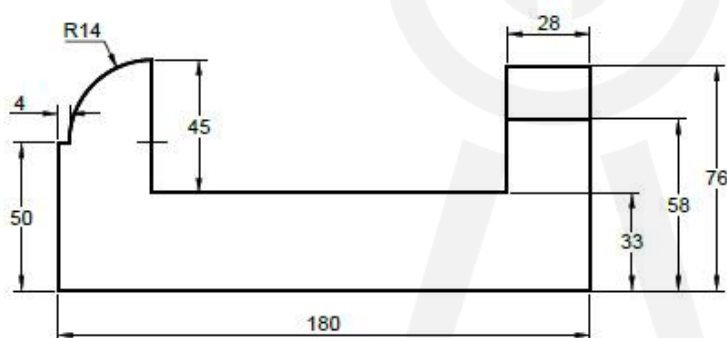
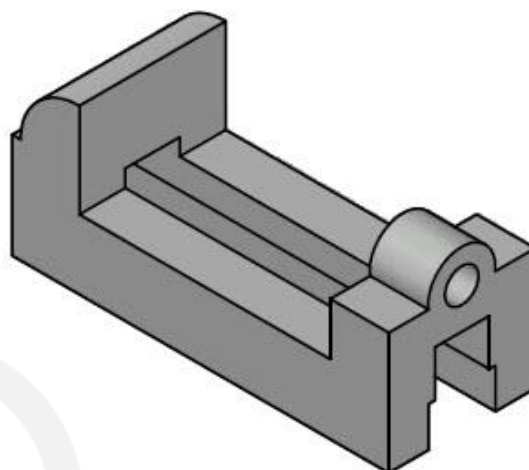
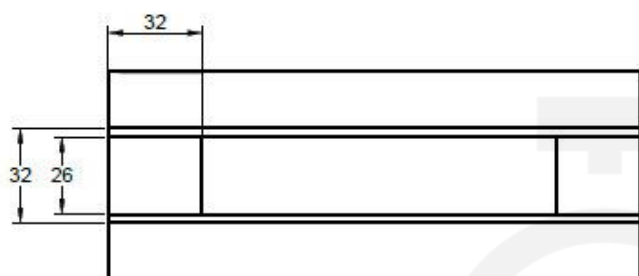
3D-1



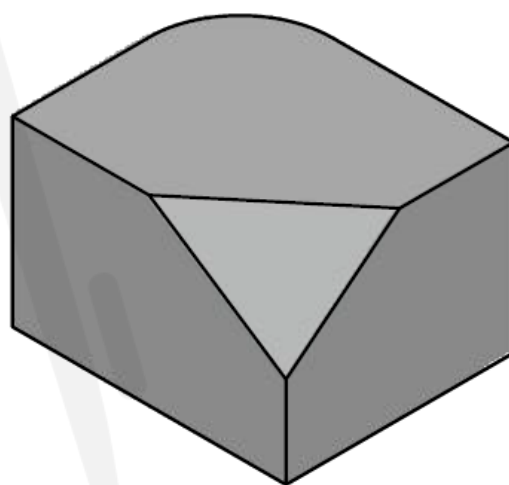
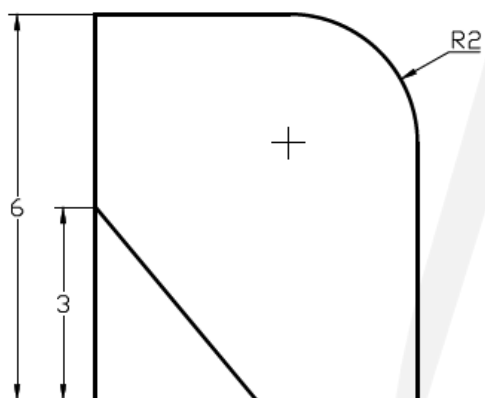
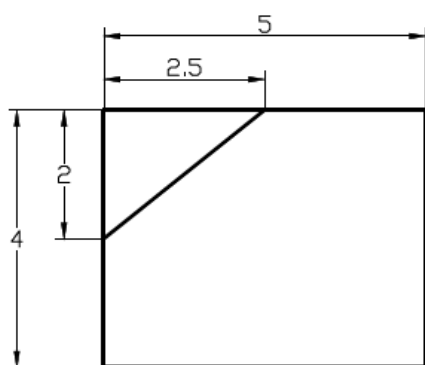
3D-2



3D-3

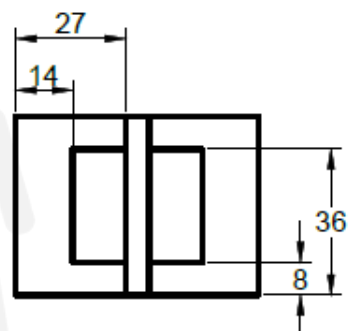
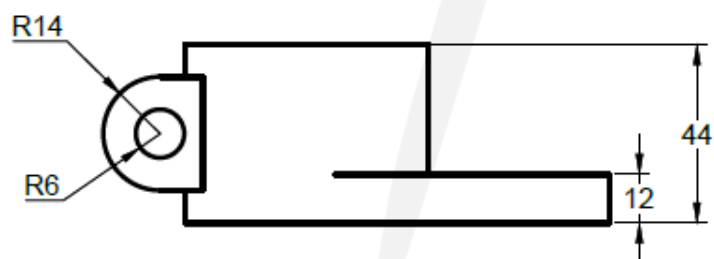
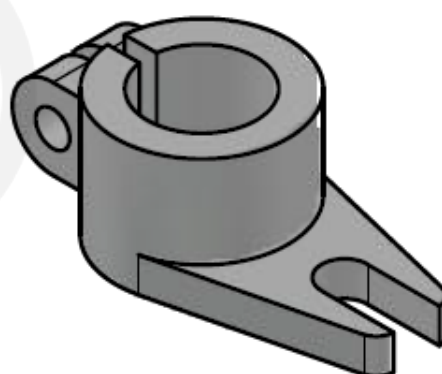
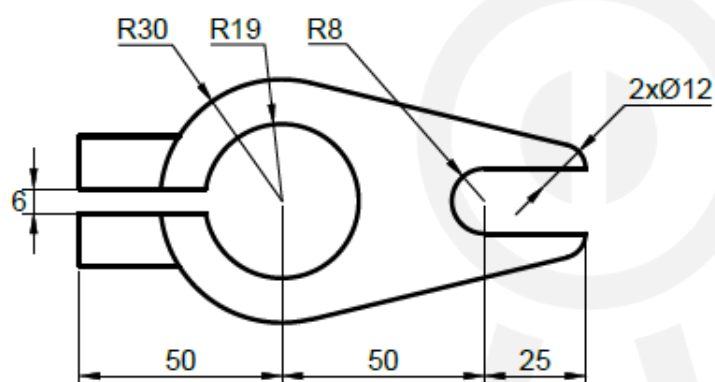


3D-4

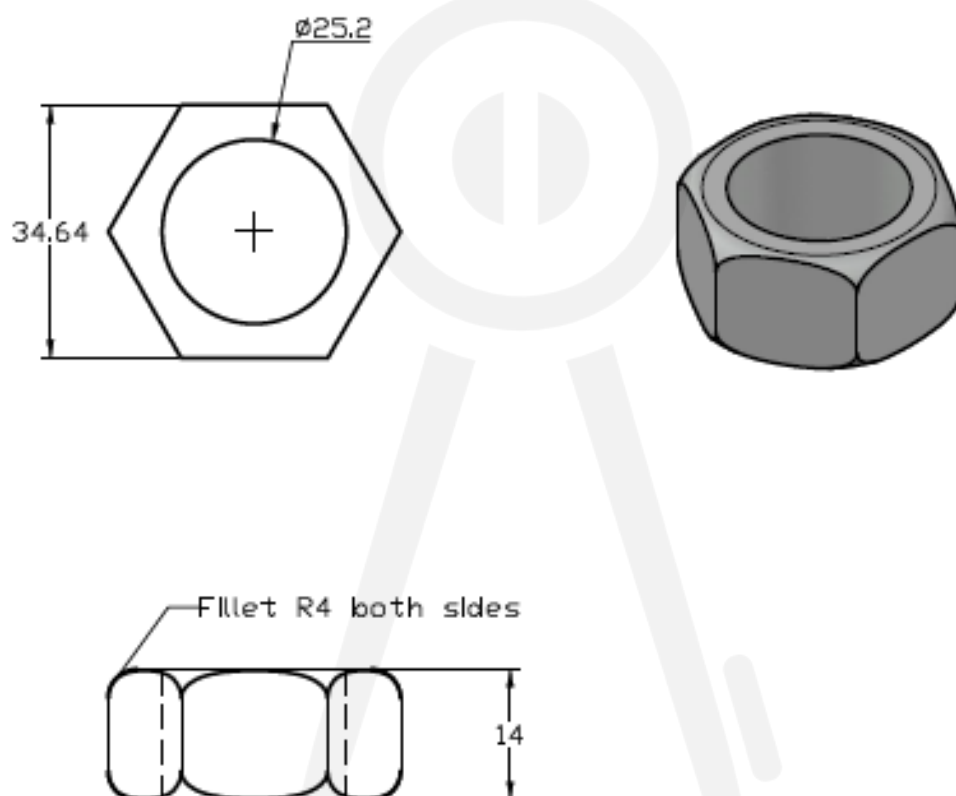


3D-5

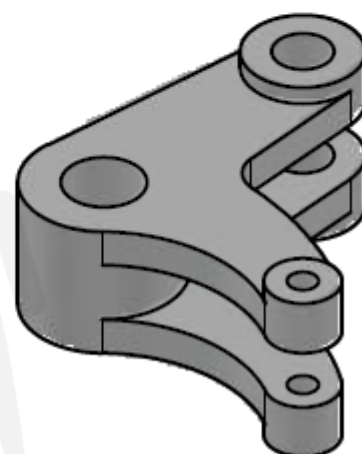
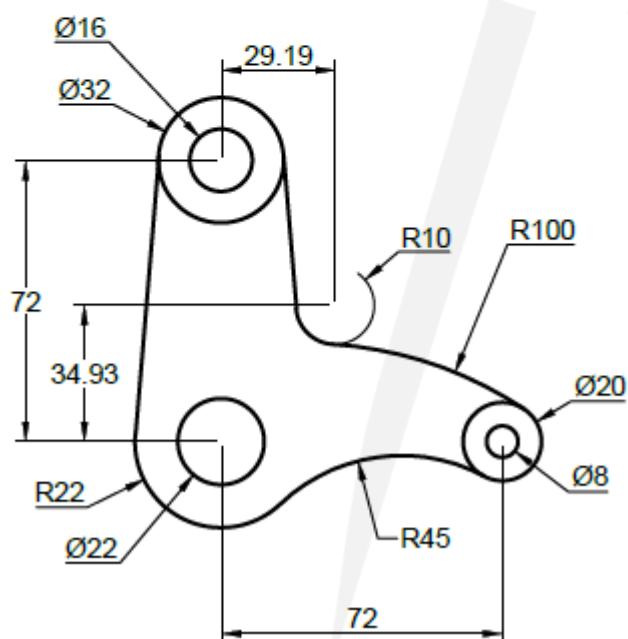
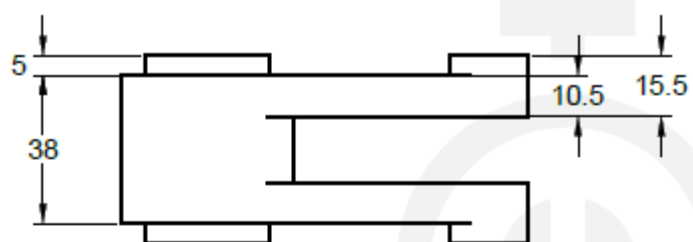




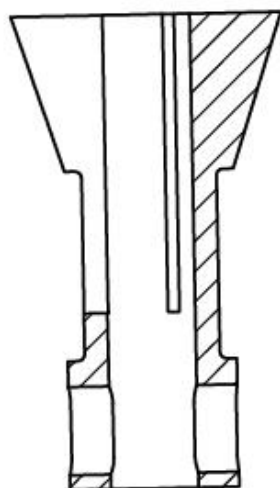
3D-6



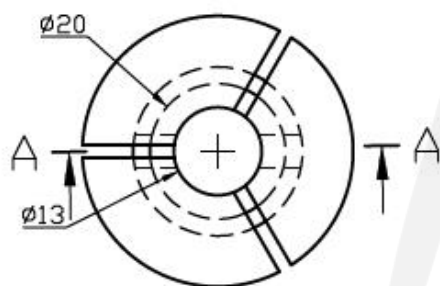
3D-7



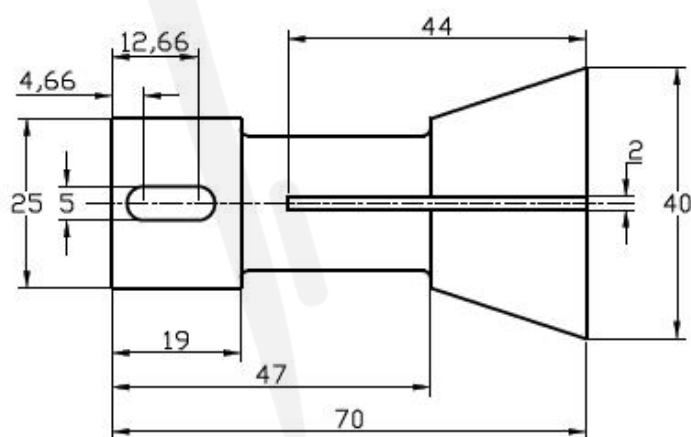
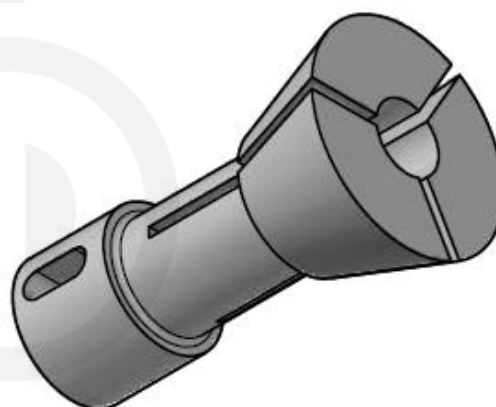
3D-8



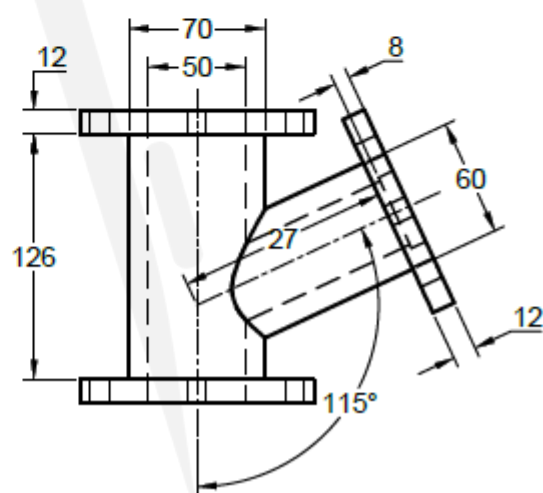
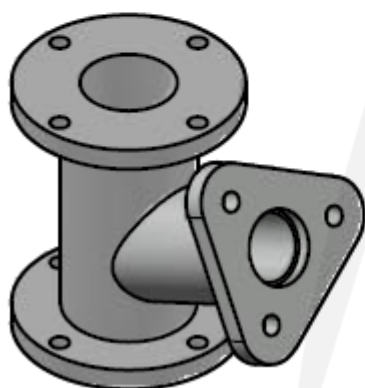
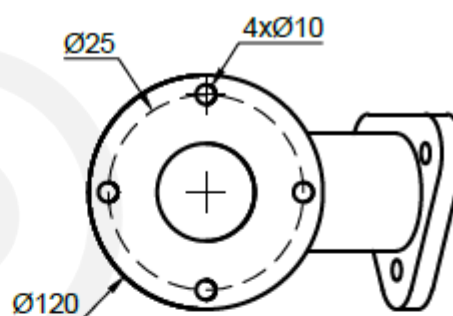
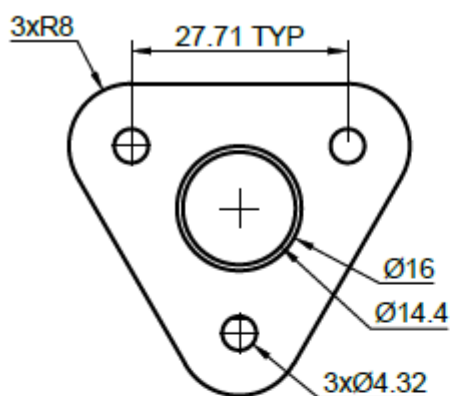
A-A (1:1)



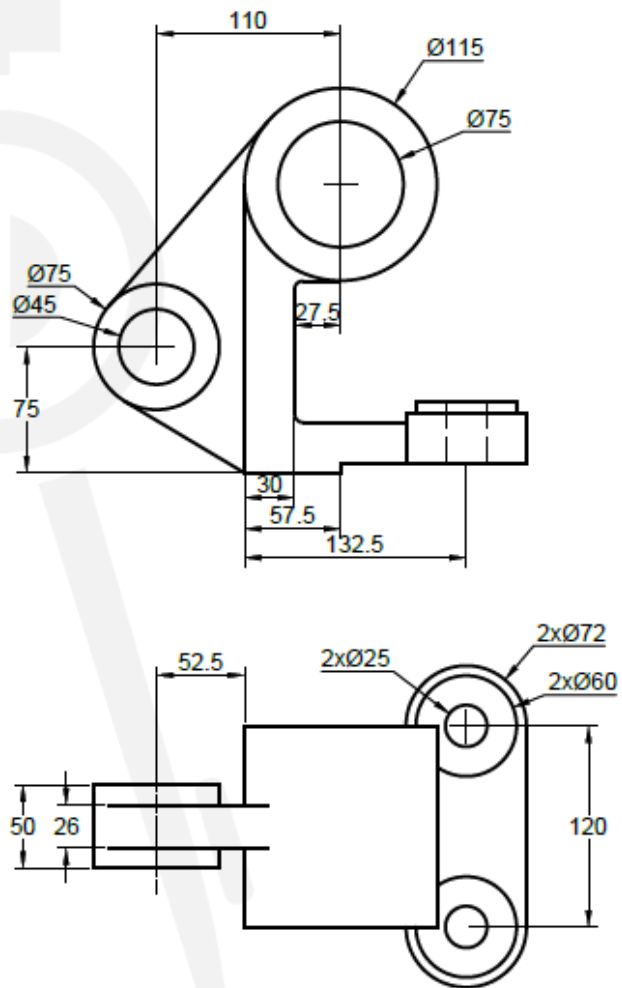
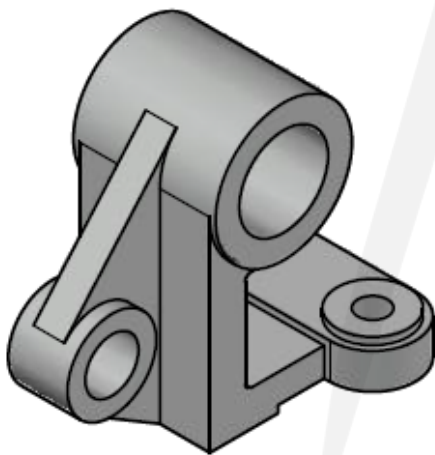
All Fillet RadII 1 Unit



3D-9

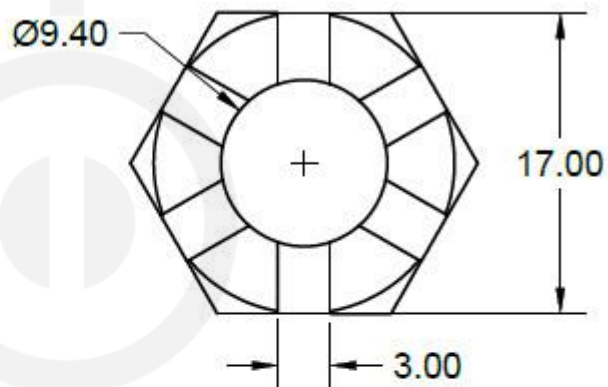
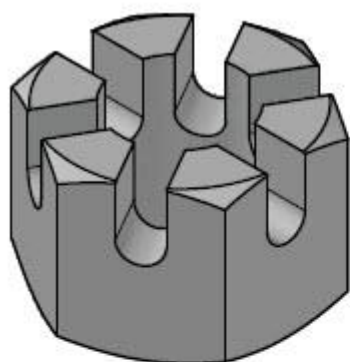


3D-10



All fillet radii 5 units

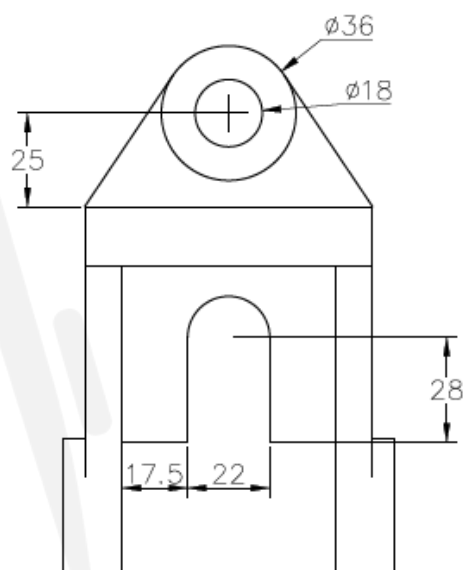
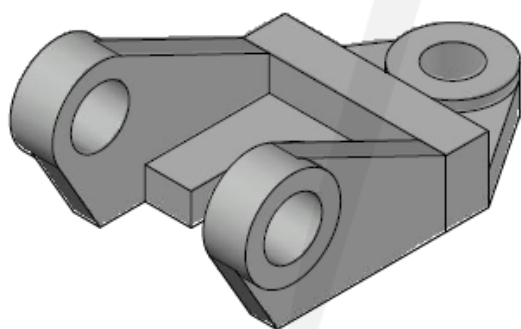
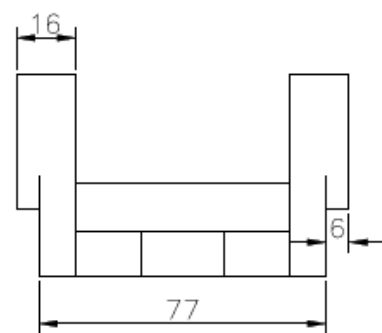
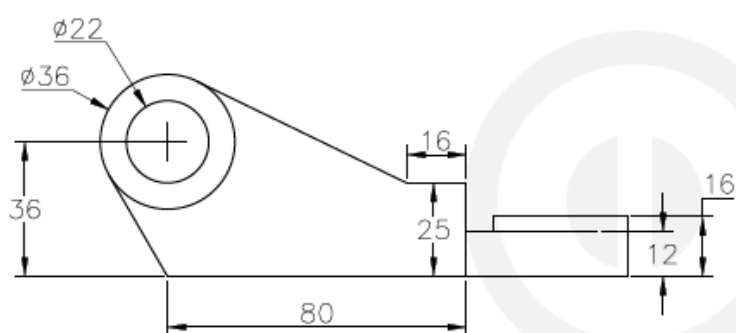
46



30° incline from quadrant of top circle or dia 17

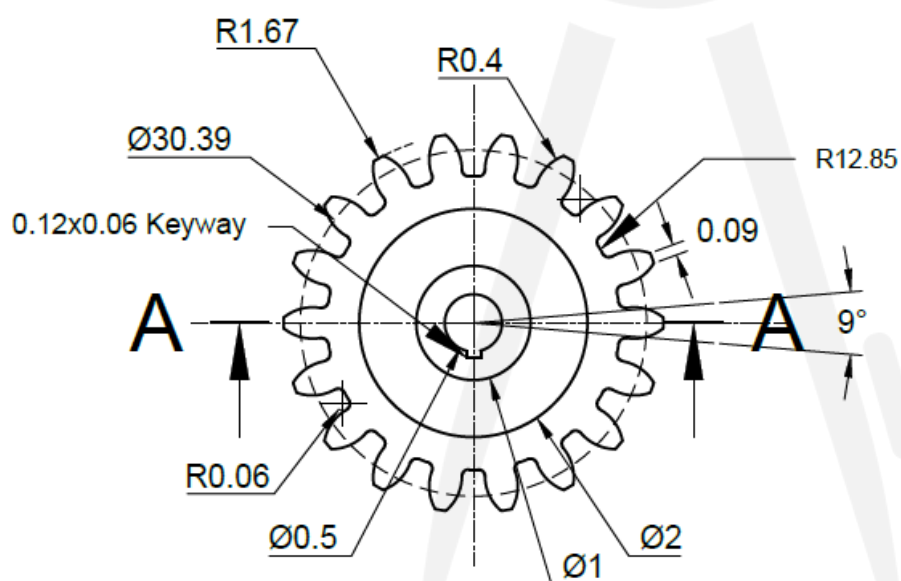
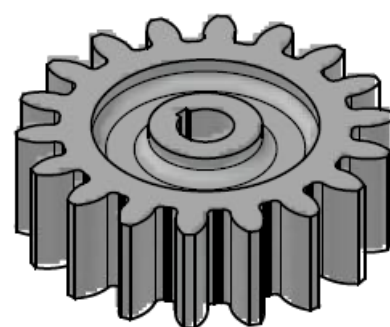
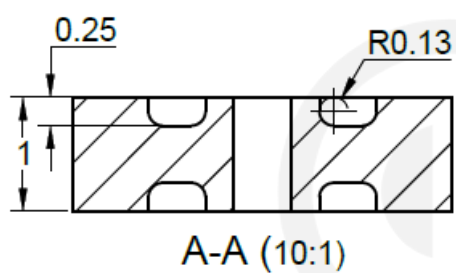


3D-12

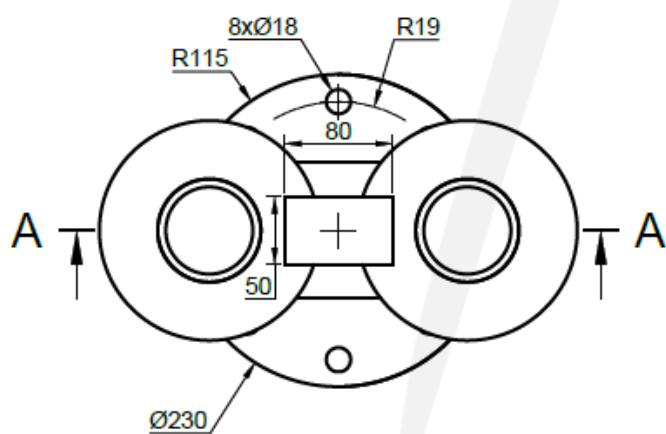
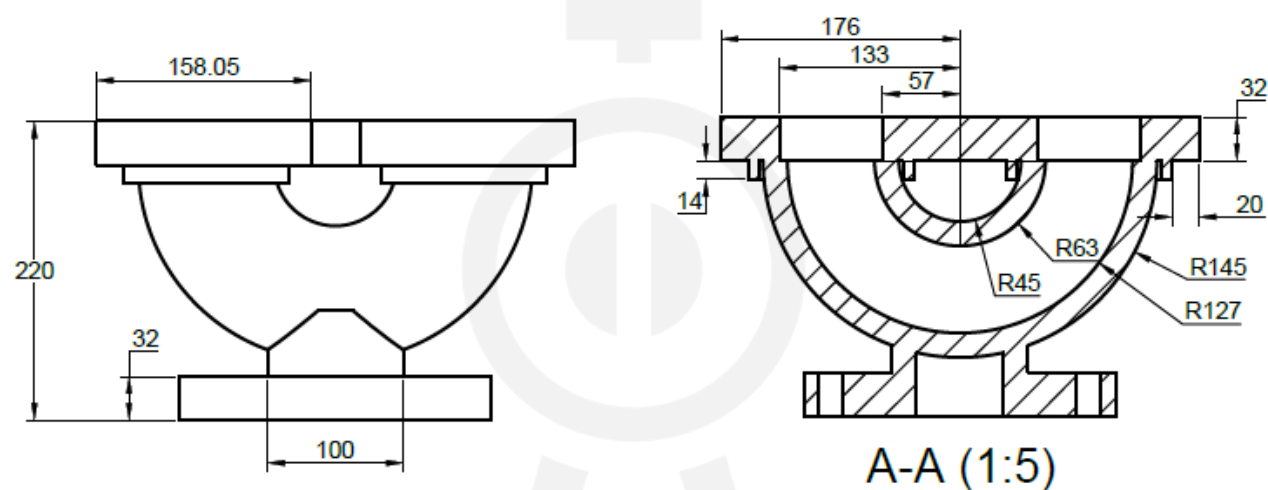


3D-13

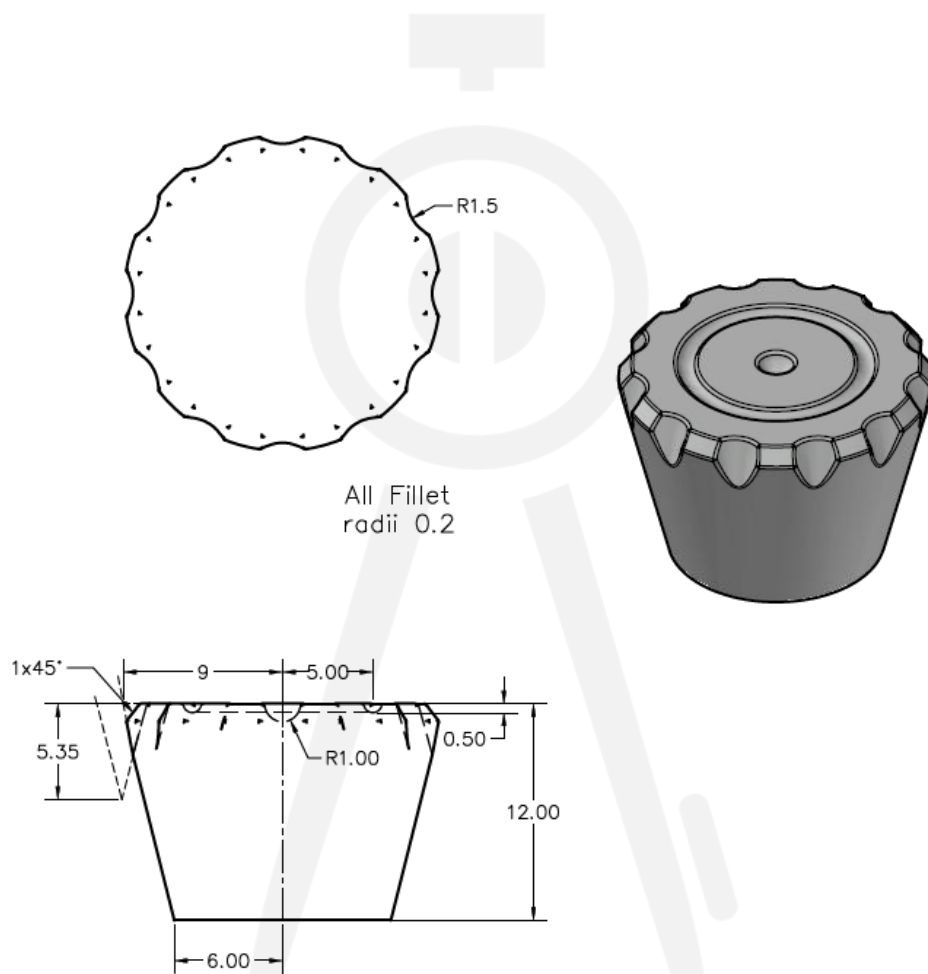




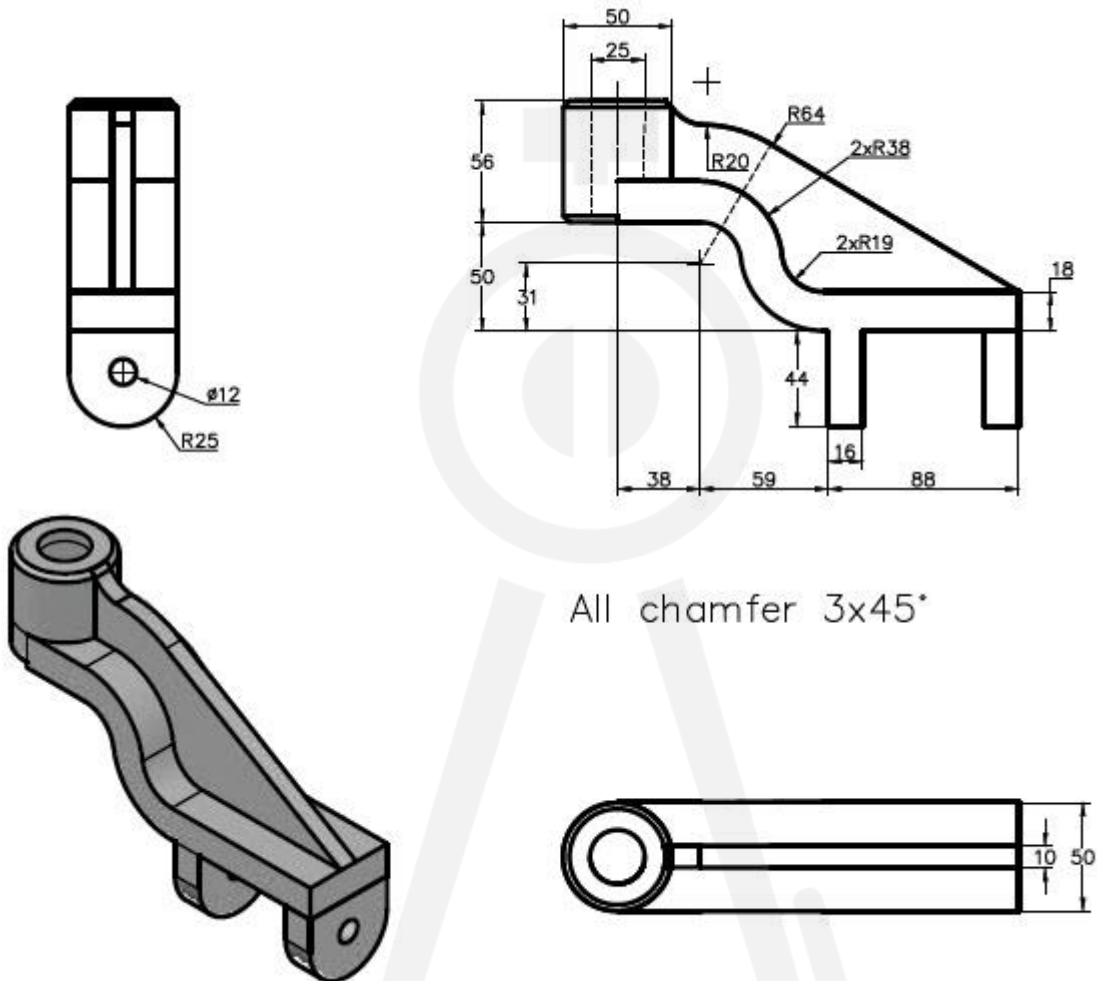
3D-14



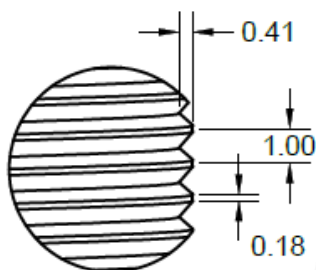
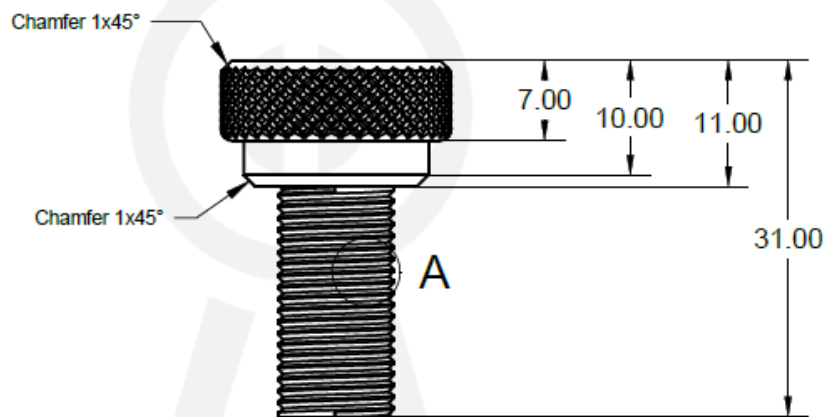
3D-15



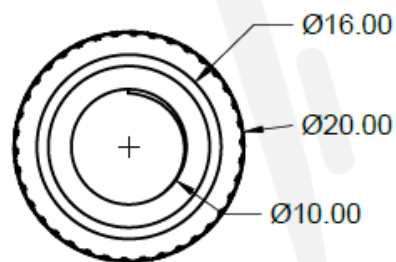
3D-16



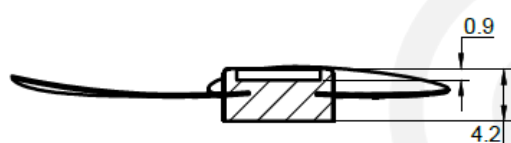
3D-17



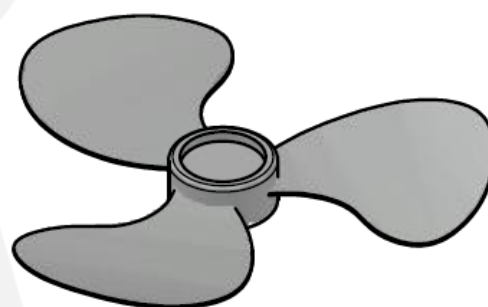
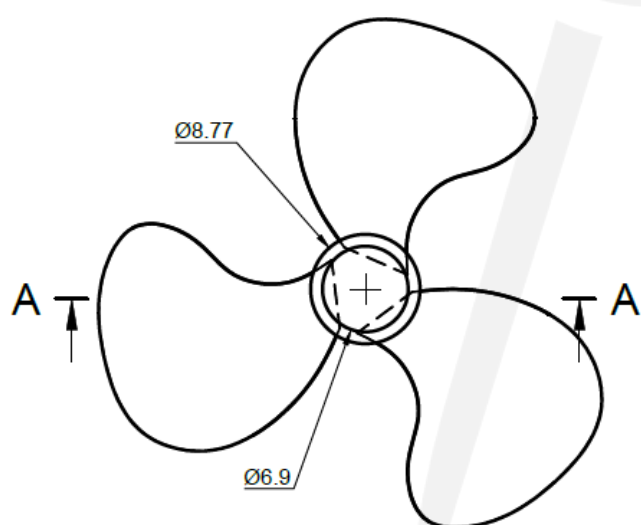
DETAIL A  
SCALE 1:4



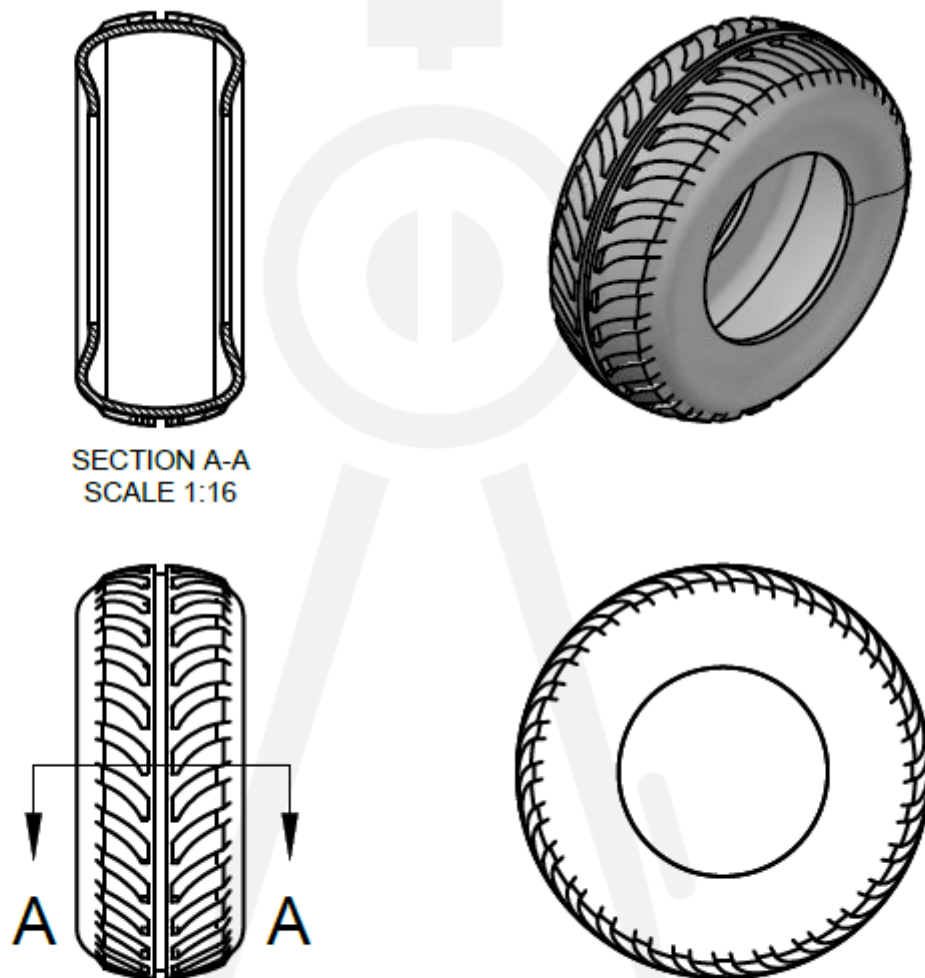
Make diamond knurling as per your own specifications or follow the explanation video on SourceCAD



A-A (2:1)



Use profile of fan blade in top view to trace the geometry.

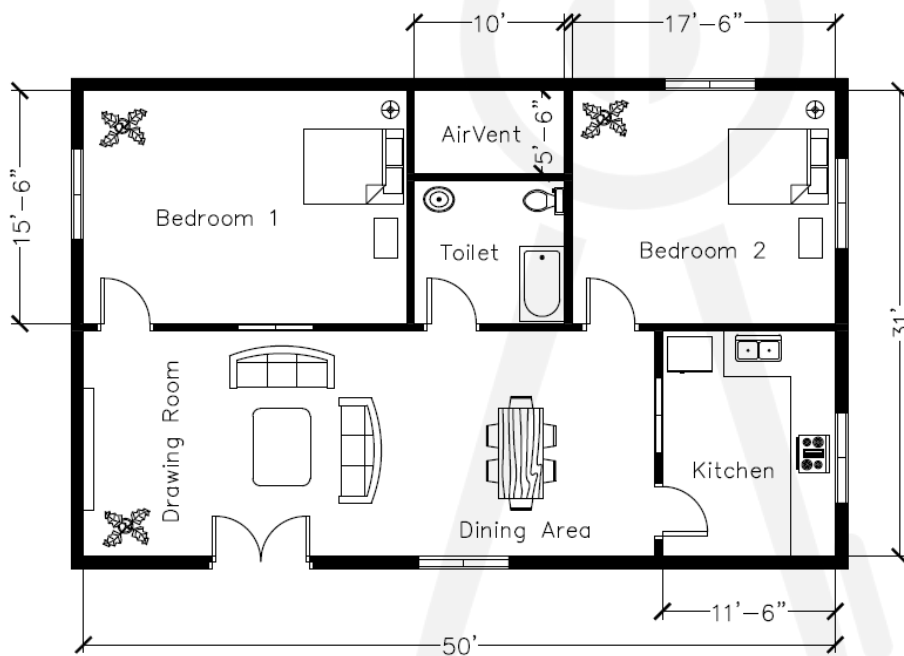


Use splines and arc to make the profile of tire or use the video explanation of this video on SourceCAD

---

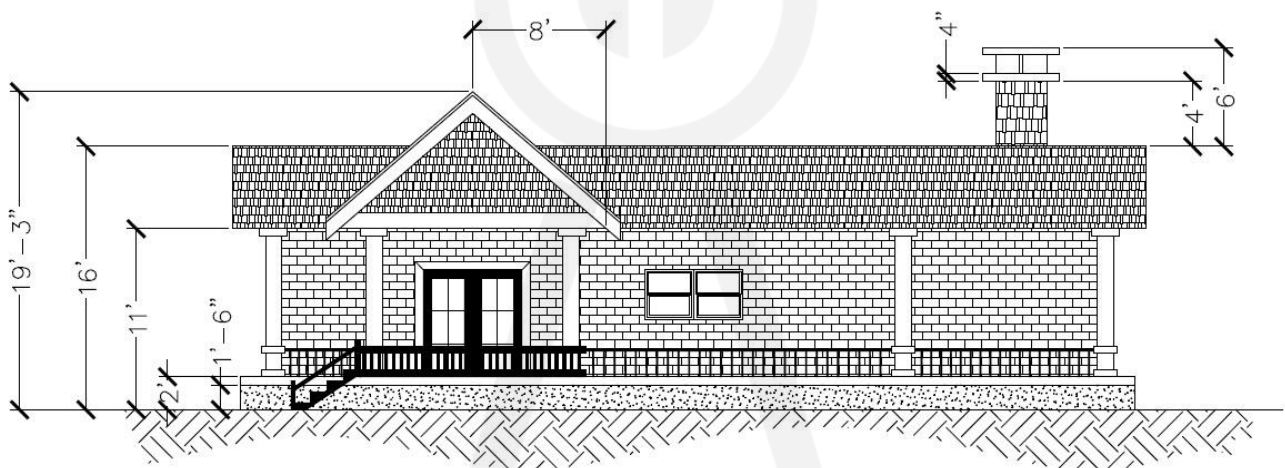
projects  
drawings



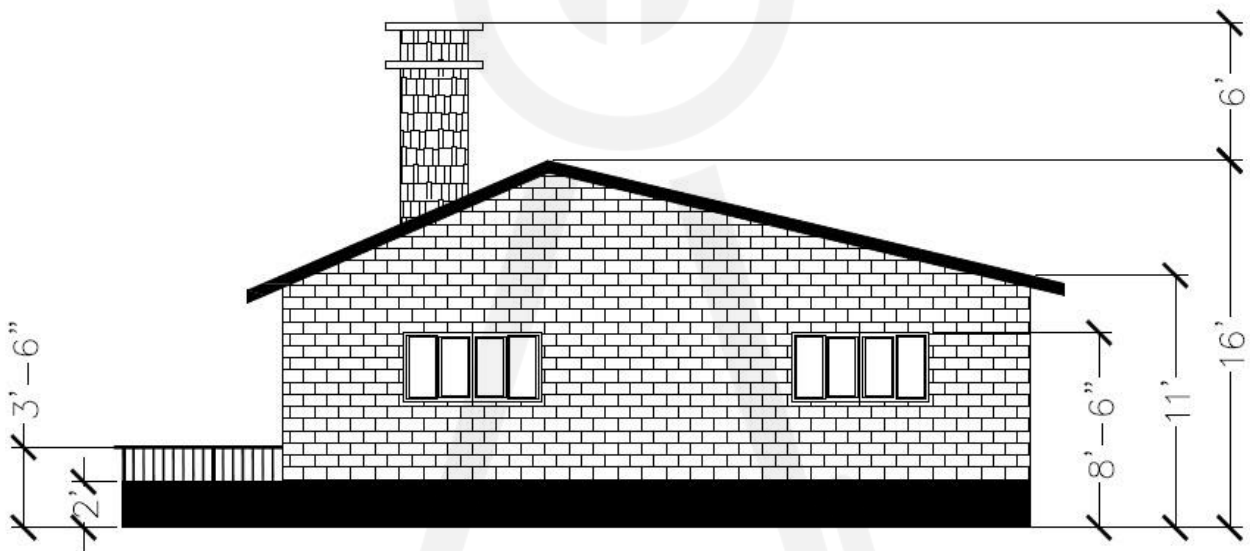


Note:  
Exterior wall  
thickness is 10"  
Interior wall  
thickness is 6"  
Use design center for blocks

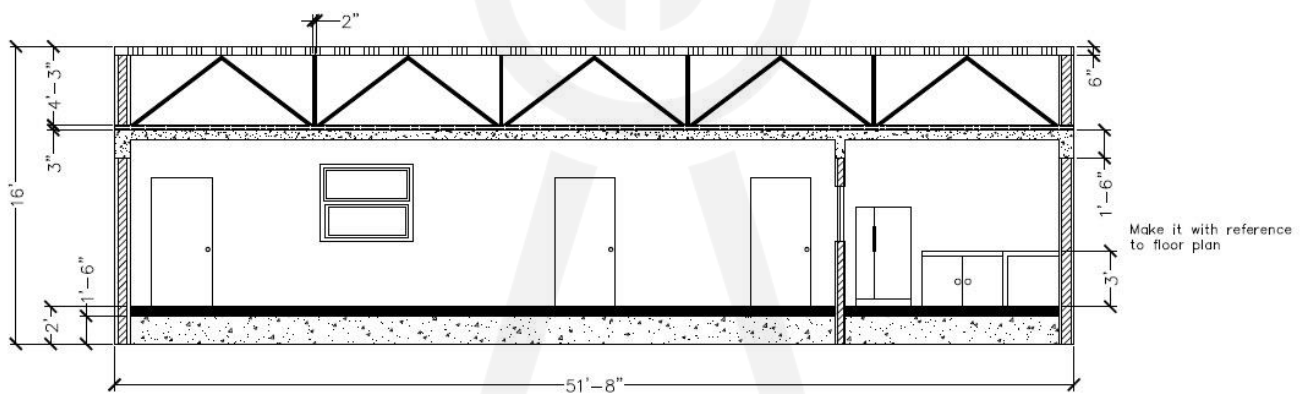
## Project-1



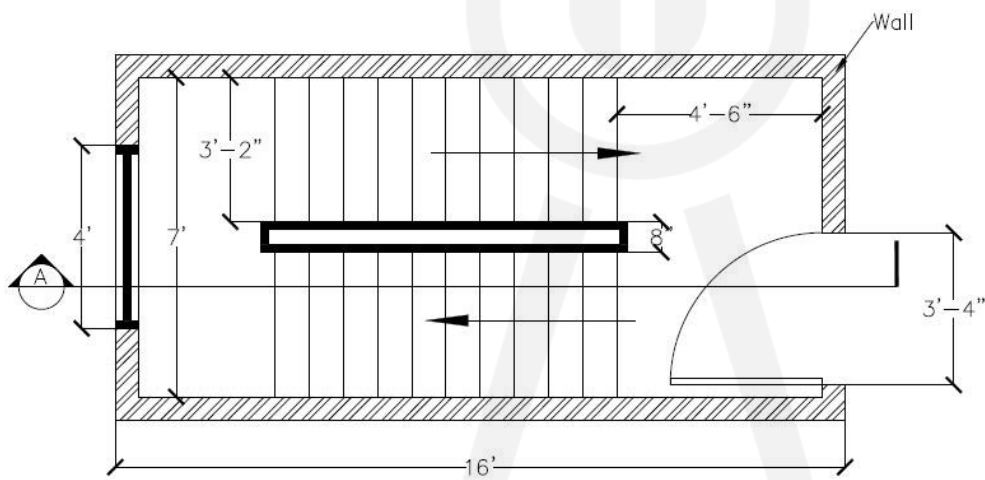
## Project-2



**Project-3**

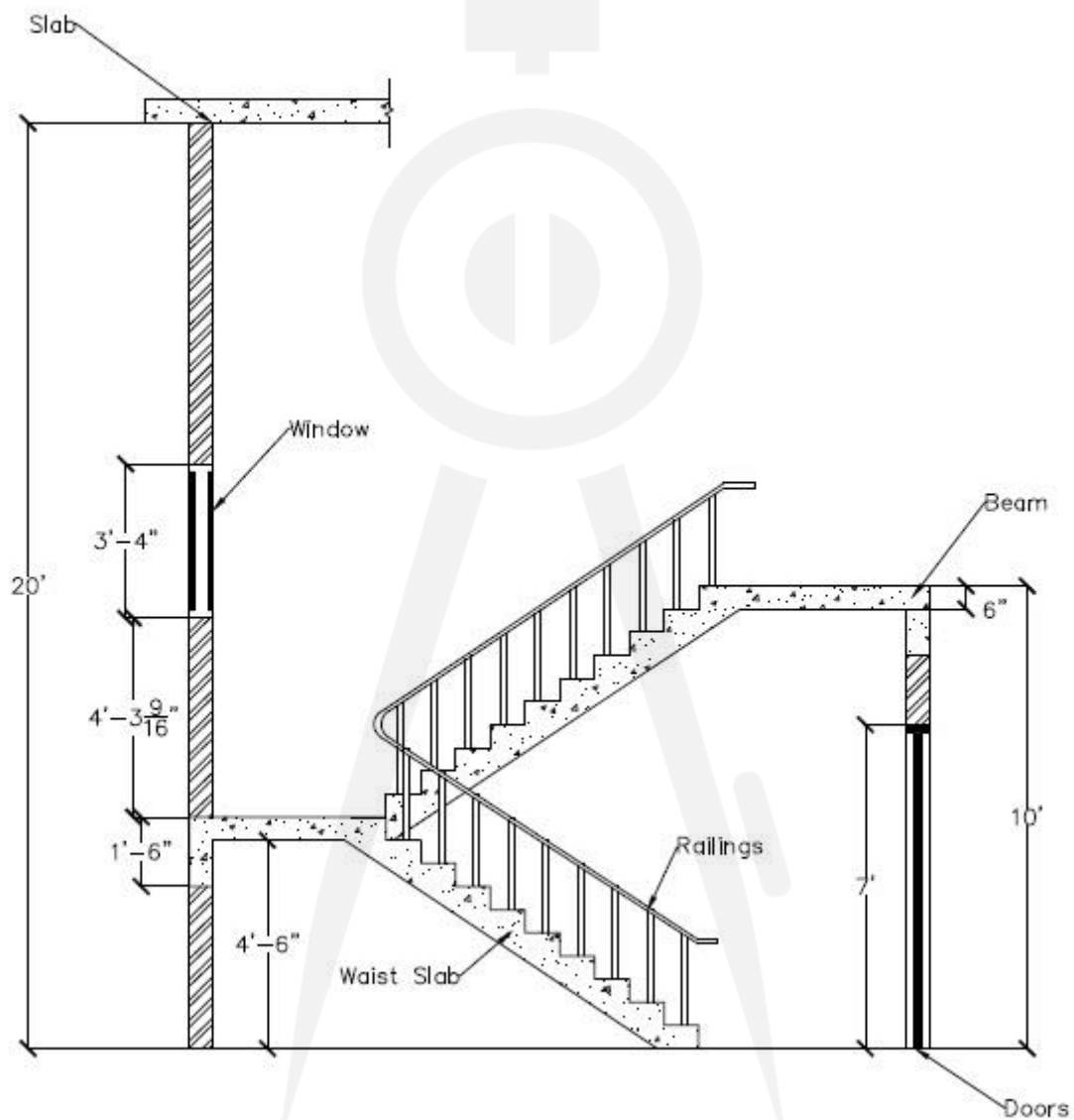


## Project-4

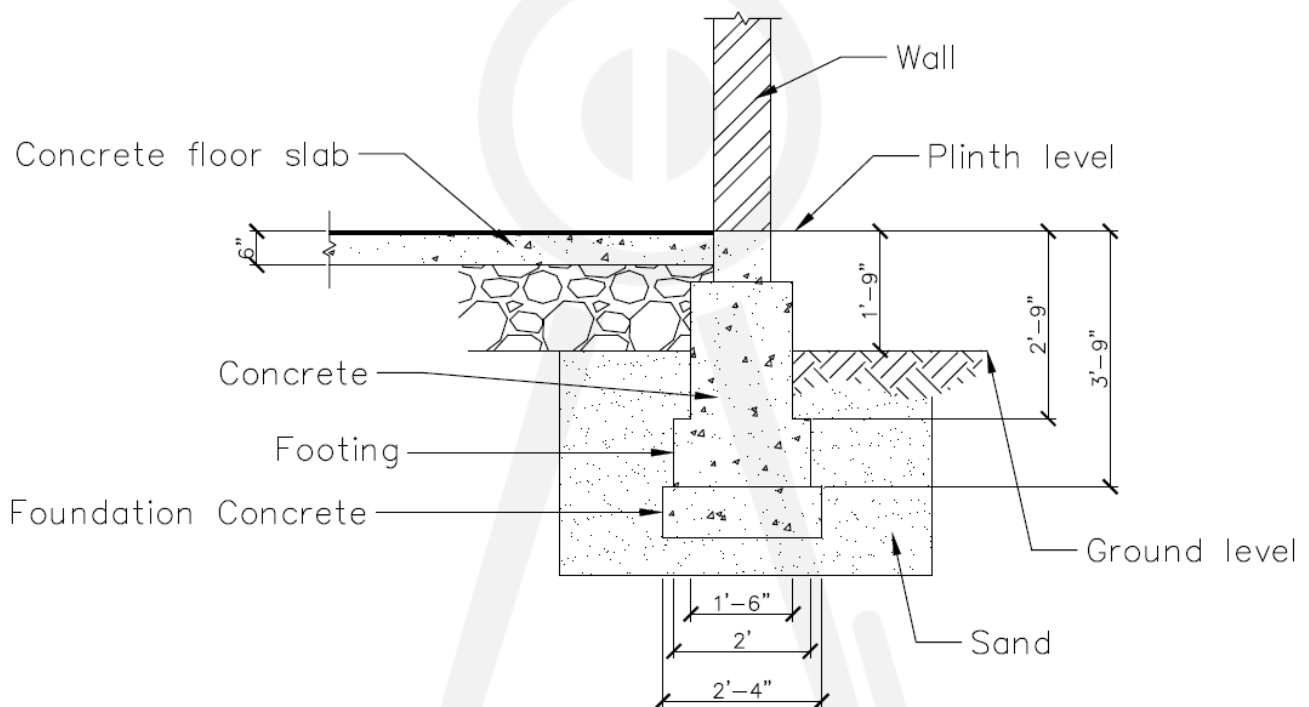


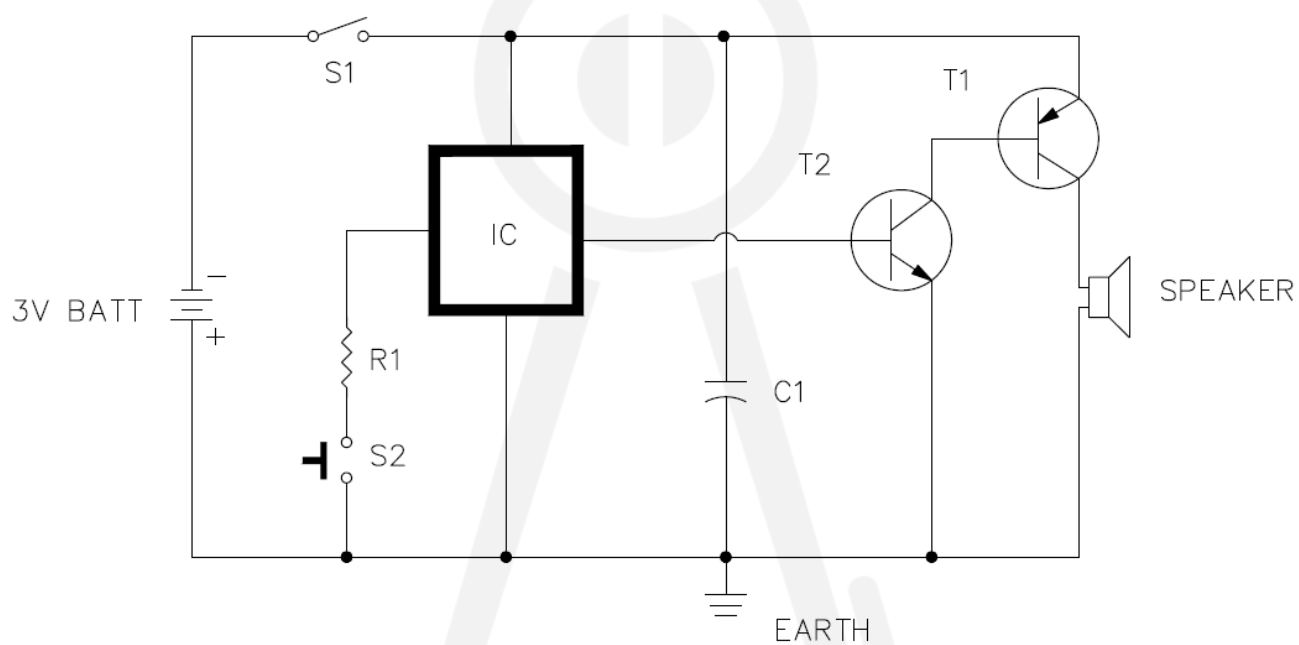
Tread 9"  
Rise 6"  
Railings height 2'  
Wall 6"

## Project-5



## Project-6

**Project-7**

**Project-8**





## Jaiprakash Pandey

I am a mechanical engineer and I have worked with Design, Manufacturing and Training industries and currently, I work as CAD corporate trainer. I train corporate clients in AutoCAD, Fusion 360, and Geometric dimensioning and tolerancing and help them develop the skill set of their workforce.

I am Autodesk AutoCAD Certified Professional and an Autodesk expert elite member. I am a regular contributor to AUGI World magazine and apart from SourceCAD I also develop AutoCAD video courses for Pluralsight and other E-Learning businesses.

SourceCAD is a platform developed by me and it hosts video courses and tutorials on different CAD software and engineering drawing related topics. The courses and tutorials are free as well as paid.

This eBook was provided to you by SourceCAD, for more AutoCAD courses and videos visit SourceCAD on [www.thesourcecad.com](http://www.thesourcecad.com)

### Disclaimer

All the content of this eBook is provided as is without any warranty either express or implied. Although a lot of care has been taken in making the drawings complete and error free but if you happen to stumble across any drawing which is incomplete or with incorrect dimensions then let us know on [admin@thesourcecad.com](mailto:admin@thesourcecad.com)

Copyright protects all the content of this eBook, contact [admin@thesourcecad.com](mailto:admin@thesourcecad.com) for reprint and reuse permissions in part or full.